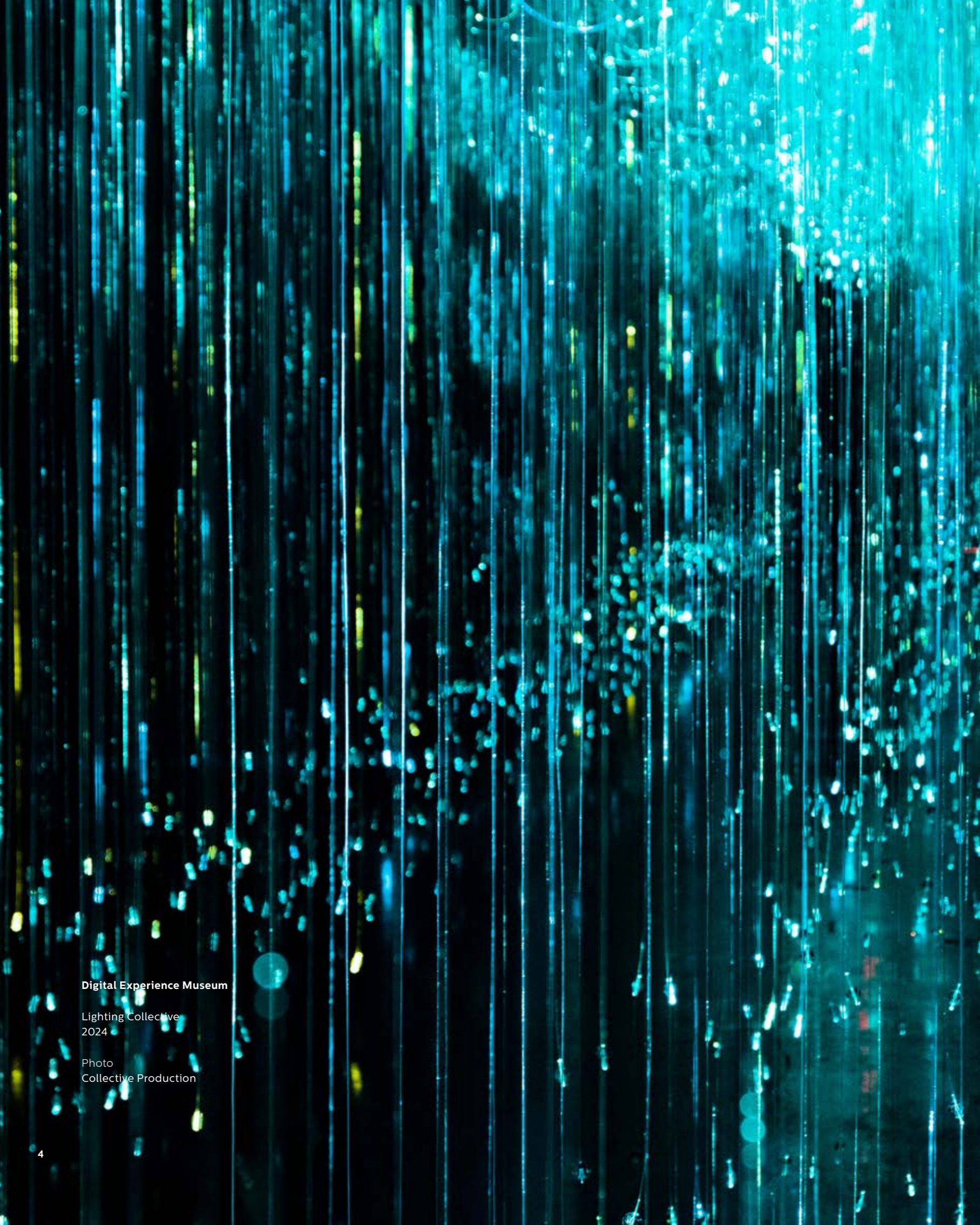




LIGHTING COLLECTIVE
PORTFOLIO 2026



a collective work



Digital Experience Museum

Lighting Collective
2024

Photo
Collective Production

7	The Story
9	Manifesto
12	The Silent Guide of Space
16	The Composer of Emotion
18	Comfort, Perception, and Light
20	Why Brand-Independent Lighting?
24	Lighting Design Phases
30	Portfolio
168	Projects
170	References
172	The Team
174	Contact

Sagalassos Antique City

Lighting Collective
2025

Photo
Collective Production

The story

“We find beauty not in the thing itself
but in the patterns of shadows, the
light and the darkness, that one thing
against another creates.”

– Jun'ichirō Tanizaki

We founded Lighting Collective in Istanbul in 2020 as a team that believes in the transformative power of light. We believe that light is not merely a technical detail, but one of the most important elements that defines the spirit of a space.

With members specialized in lighting design, consultancy, planning, and automation, we came together to produce brand-independent, high-quality, and sustainable lighting solutions. As young professionals from different disciplines, we believe that designing a better lighting experience is only possible through collaboration, and we work together with this understanding.

“For a future where light better touches into spaces, cities, and lives, we continue to collaborate and promote quality lighting.”

LC Studio

Manifesto

“There are 360 degrees, so why stick to one?”

– Zaha Hadid

LIGHTING COLLECTIVE aims

For us, lighting is not merely a technical requirement; it is a holistic design tool that reveals the character of a space, enriches user experience, and improves quality of life. We prioritize quality over quantity and see the correct use, quality, and impact of light in every project as a shared responsibility.

Our identity is shaped by the combination of our members' technical knowledge, academic background, and artistic perspectives. We aim to help high-quality lighting become more widespread on a larger scale through this identity.

For a future where light better touches into spaces, cities, and lives, we continue to collaborate and promote quality lighting..

“Solidarity is not about people being alike, but about them being able to act together.”

— Rosa Luxemburg

Manifesto

LIGHTING COLLECTIVE operates

We embrace a horizontal and collaborative organizational structure—a collective model where contribution matters more than titles, and different disciplines come together at the same table.

In our work model, which prioritizes experience, merit, and effort, every member’s contribution is valued, and rewards are shared fairly in proportion to the work invested. We view success not as an individual achievement but as a collective gain. Our goal is not only commercial success, but also to make the design process enjoyable, motivating, and productive for everyone involved.

When developing our projects, we carefully analyze numerous parameters such as color harmony, spatial perception, installation and site conditions, automation systems, and different usage scenarios. This process requires the collaboration of diverse areas of expertise. Each discipline within the Collective comes together in a multidisciplinary environment to transform design ideas into reality.

This system provides a working environment that makes the design process more motivating, efficient, productive, and high-quality for all members.

Hagia Sophia

Lighting Collective
2021

Photo
Collective Production



The silent guide of space

Throughout history, light has played a key role in shaping meaningful moments, emotions, and spatial experiences, and it has become one of the most effective foundation stone of architecture.

Although it is not a physical material, light is a fundamental design element that defines how a space is perceived, shapes its atmosphere, and governs the relationship between the space and its users. No matter how strong a building's dimensions, form, or materials may be, none of these elements can fully come to life without light. Light makes architecture visible; working together with shadow, it defines volumes, reveals surfaces, and brings depth and balance to a space.

In architectural design, the role of light goes far beyond merely meeting illumination needs. Natural or artificial light determines the character of a space, allowing for the creation of warm, inviting, calm, or dramatic atmospheres. The direction, intensity, color, and daily changes of light directly influence how users perceive the space and the emotions they feel within it. For this reason, a space is evaluated not only by its physical dimensions but also by the quality of light it receives and the distribution of shadows.

"Light is not just a detail, it is a fundamental part of architecture."

— Renzo Piano

Well-planned lighting design emphasizes architectural details, highlights material textures, and strengthens the story the design intends to tell.



Cityloft 147

Lighting Collective
2023

Photo
Collective Production

"Architectural lighting design is about the
absence of light as much as it is about the
presence of light."

— Hervé Descottes

Light is like the silent language of a building; it conveys emotions without words, defines the atmosphere, and creates an invisible connection between the space and its users.

The composer of emotion

In contemporary architectural practice, lighting design has become an interdisciplinary field that brings together aesthetics and functional requirements. In both residential and commercial buildings, criteria such as energy efficiency, visual comfort, and user experience are fundamental components of lighting design. Light not only enhances the functionality of a space but also helps define its identity. For this reason, lighting design is no longer just a technical application; *it is a strategic design decision that must be considered from the earliest stages of an architectural project.* A successful architectural project achieves a holistic and impactful quality to the extent that it treats light not merely as a tool, but as an inseparable part of the design itself.

Lighting design is not merely a technical element; it is a powerful expressive tool that gives a space its *spirit* and *identity*. Light is like the silent language of a building; it conveys emotions without words, defines the atmosphere, and creates an invisible connection between the space and its users.

The same space can take on entirely different meanings under different lighting scenarios. For this reason, light is not only a functional but also an emotional design element in architectural projects. The direction, color, intensity, and rhythm of light directly influence the feel of a space. Soft, warm-toned lighting creates a sense of safety and tranquility, while dramatic contrasts and sharp shadows can produce a powerful, striking, or even mysterious atmosphere.

It reveals surface textures, enhances the character of materials, and defines the focal points of a space. Through lighting, a staircase can become a sculptural element, a plain wall can transform into a dramatic backdrop, or a large hall can take on an intimate atmosphere. *In this context, light serves as a compositional tool that sets the emotional tone of a space.*



Sagalassos Antique City

Lighting Design
Lighting Collective
2025

Photo
Collective Production

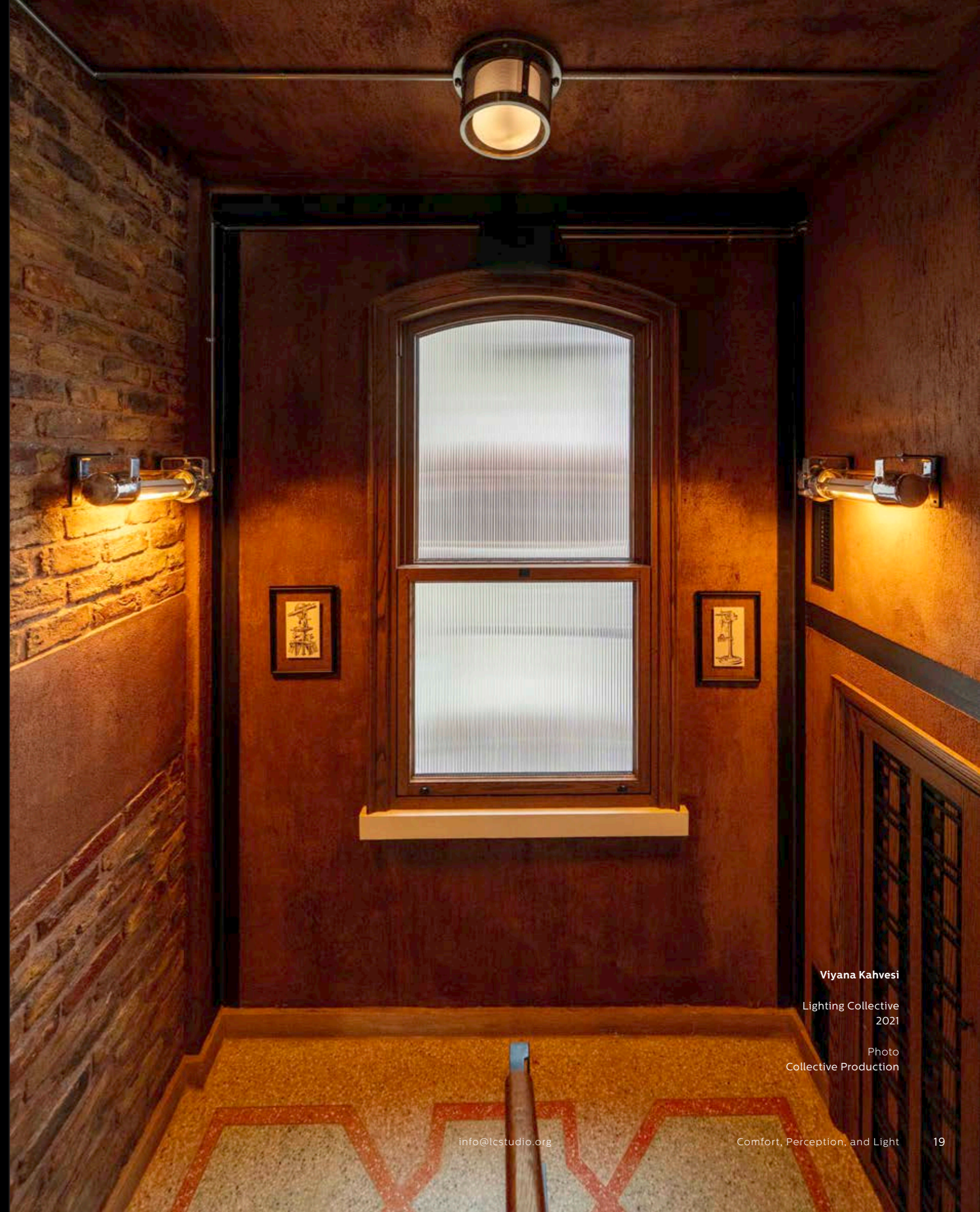
"Architecture is about values and quality of life. And that comes down to the balance of light, space, and material."

— Norman Foster

Comfort, perception, and light

From the perspective of user experience, light is one of the most important factors determining the quality of time spent in a space. Well-designed lighting provides visual comfort, supports the function of the space, and consciously shapes the spatial experience by guiding perception.

In conclusion, lighting design adds not just light but meaning to an architectural project. *It builds the spirit of a space*, conveys it to the user, and makes the story the design intends to tell visible. A successful architectural project achieves its true impact when light is treated not merely as a necessity, but as a creative force that reveals the emotional and aesthetic potential of the space.



Viyana Kahvesi
Lighting Collective
2021

Photo
Collective Production

Why brand-independent lighting?

- Design Freedom
- Trust and Transparency
- Qualified Product Selection and Integration
- Genuine Competition and Cost Advantage
- Impartial Product Selection and Optimization
- Sustainability and Flexibility
- Maximizing the Project's Potential
- Provides Economic Benefits
- Balances Aesthetics and Function
- Ensures Ease of Adaptation

Lighting design is one of the fundamental elements that shape the aesthetic, functional, and emotional dimensions of architectural projects. However, for this process to progress in a healthy and sustainable way, it is crucial that design decisions are made based on the project's needs rather than being tied to a specific brand. A brand-independent approach to lighting ensures that the design develops with a focus on concept and performance, rather than on products.

Brand independence primarily means design freedom. Each project has its own unique identity, user profile, and technical requirements. If the design process is limited to the product range of a specific manufacturer, the full potential of the space may not be realized. In contrast, a

brand-independent approach allows criteria such as light color, beam angle, fixture type, control systems, and energy efficiency to be determined entirely according to the project's needs. This enables the development of more creative and original solutions.

This approach also provides technical and economic advantages. By comparing products from different manufacturers, the most suitable options can be evaluated in terms of performance, quality, warranty period, and cost. This allows the project budget to be used more efficiently while optimizing long-term maintenance and operational expenses. In large-scale projects in particular, establishing a flexible supply chain plays a critical role in ensuring the sustainability of the process.

Galata Tower
Lighting Collective
2024

Photo
Collective Production





Bluemosque

Lighting Collective
2023

Photo
Collective Production

Why brand-independent lighting?

Brand-independent lighting also strengthens the trust between the designer and the client. In this approach, the priority is not selling a specific product, but ensuring that the project is illuminated in the most appropriate way. The designer clearly defines technical specifications and performance criteria, allowing different brands' equivalent products to participate in the process. This provides a significant advantage in terms of both transparency and quality control.

In conclusion, brand-independent lighting allows design to be shaped by architectural vision rather than commercial constraints. The value that light brings to a space emerges through proper planning, technical knowledge, and aesthetic understanding. Truly successful lighting design arises when the focus is on the relationship between light and the space, rather than on the product itself.

Lighting design phases

Design Phase

Concept Design

Every successful lighting design begins with a clear understanding of the architectural vision, user needs, and technical requirements. The first step in our process is a preliminary concept study, developed through close, interdisciplinary collaboration, which sets the foundation for the project's key decisions.

We start by gathering all architectural drawings and visual materials in full, then meet with stakeholders to align on the design concept and technical goals. Using these insights, we create and present a tailored lighting approach that reflects the project's overall vision.

This concept stage lays the groundwork for the phases that follow. The approved approach is refined in detail to meet both aesthetic ambitions and functional performance, ensuring a design that is as beautiful as it is technically sound.

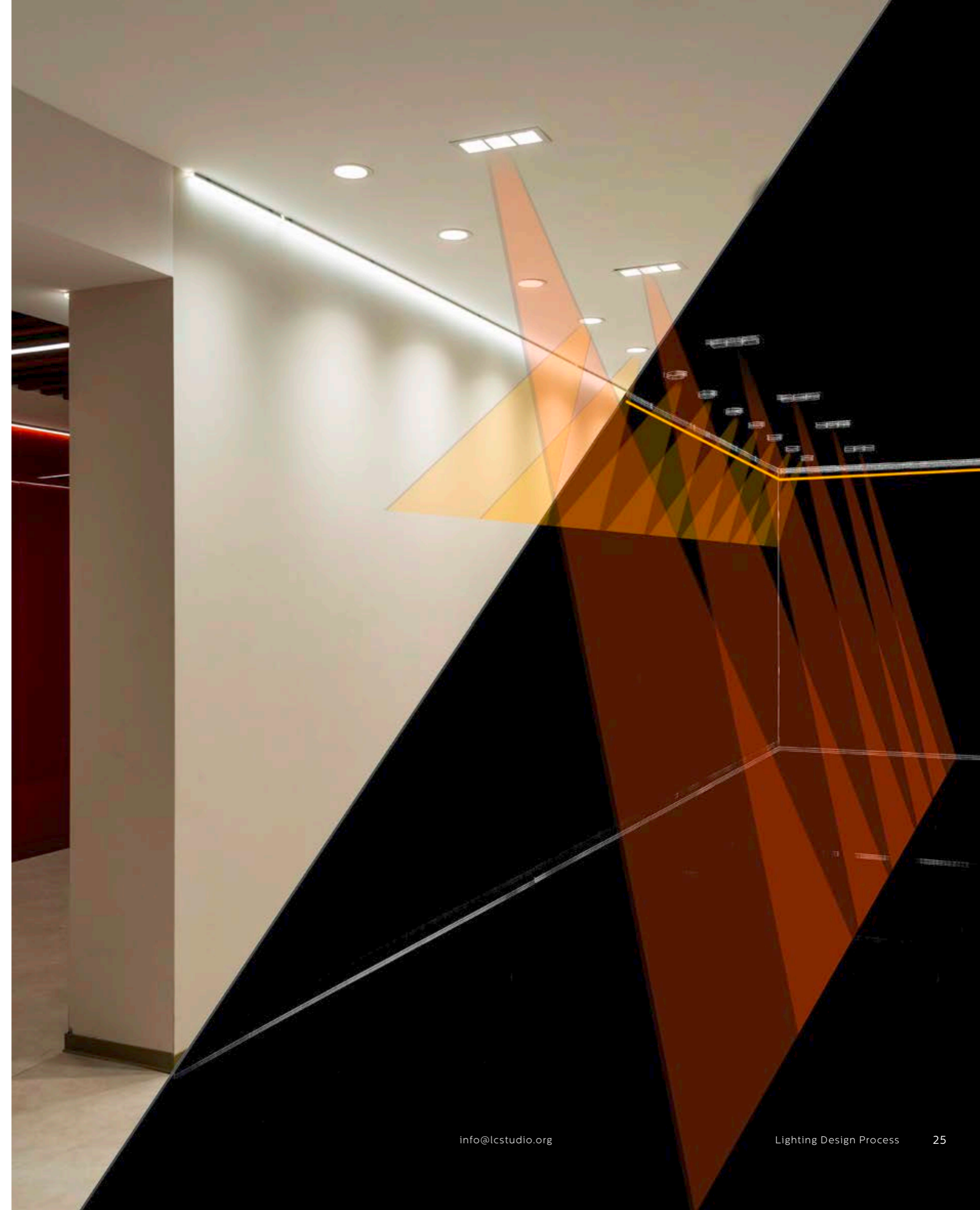
Schematic Design

The schematic design stage is crucial for testing the feasibility of the concept developed during the preliminary phase and for laying the groundwork for detailed project documentation. In this process, interdisciplinary coordination is strengthened, and the first technical steps are taken to translate ideas into drawings in close collaboration with the architectural teams.

Within this scope, preliminary lighting layout plans prepared by the architectural teams in line with the lighting concept are received. Based on these plans, the schematic lighting layout is developed. A draft product specification table, containing technical information for the proposed luminaires, is also prepared at this stage and incorporated into the process.

The schematic design phase represents the first detailed reflection where aesthetic, functional, and technical expectations converge. The outputs generated at this stage serve as a guide for transitioning into the implementation drawings and direct the subsequent technical detailing process.

The design phase is the process in which a unique lighting approach is developed in line with the project's needs, addressing both aesthetics and functionality together.



Design Development Phase

This is the phase where design decisions are transformed into technical drawings, simulations, and documentation, and all outputs required for implementation are produced.

Lighting Simulations

Testing the predicted lighting effects with measurable data and verifying compliance with standards is a critical stage for both functionality and user experience. In this context, simulation studies provide tangible results that demonstrate how well the design aligns with visual, technical, and regulatory criteria.

Based on the approved schematic lighting project, simulations of the relevant areas are carried out and evaluated according to criteria such as light levels, glare values, and uniformity. In line with these analyses, visualizations and simulation outputs reflecting the lighting effects are presented. In addition, the technical specifications of the product types to be used in the project are clarified, and a preliminary bill of quantities is prepared.

This stage acts as an essential control mechanism before the implementation phase, documenting both the technical accuracy and the visual performance of the project. Analyses based on simulation reports provide a reliable reference for subsequent technical design and product selection.

Implementation Project

One of the most critical stages of the design process, the implementation project ensures that conceptual decisions are translated into practical, on-site applications. At this stage, close coordination with all disciplines allows for the generation of all necessary data to deliver both aesthetic and technical details to the field.

Detailed implementation drawings are prepared based on the lighting project's plans, sections, and elevations. Detail drawings for decorative fixtures and custom lighting solutions are developed in close collaboration with architectural and interior design teams. At the same time, the technical specifications of fixtures, sensors, and control components are determined in accordance with the automation systems to be used in the project.

This stage is approached with the highest precision to ensure flawless execution of the design on site. The documentation, where every detail is clearly defined, serves as both a guide for implementation teams and a safeguard for maintaining design quality.

Technical Documentation

The final stage of the design process, technical documentation and project delivery, ensures that all project outputs are compiled and made ready for on-site implementation. This phase secures the technical accuracy of the design decisions while providing all stakeholders with clear and reliable information.

Within this scope, comprehensive BOQ (Bill of Quantities) lists are prepared, detailing the quantities and specifications of the luminaires used in the project. In addition, a brand-independent specification file is created, defining the technical limits in order to set a consistent quality standard for product selection. Alongside these, lighting simulation reports, implementation drawings, and all technical documents produced during the design process are compiled and delivered as a complete package.

This delivery package serves as a comprehensive guide to avoid any uncertainties during the implementation and procurement stages. Through the provided technical documents, design integrity is preserved, quality standards are maintained, and onsite applications can proceed in a controlled manner.



Application Phase

This phase covers the accurate on-site implementation of the design, including installation inspections, product consultancy, and system commissioning processes.

Procurement Consultancy

The successful realization of a lighting design depends not only on technical accuracy but also on the selection of the right products. For this reason, the procurement process plays a vital role in ensuring that design decisions are fully reflected on site. At this stage, consultancy focuses on both budget control and maintaining quality standards.

Based on the prepared product specifications, price offers are collected from various suppliers and evaluated for technical compliance. At the client's request, product samples are examined in detail to assess their suitability for the project. Both technical characteristics and aesthetic harmony are taken into account in these evaluations.

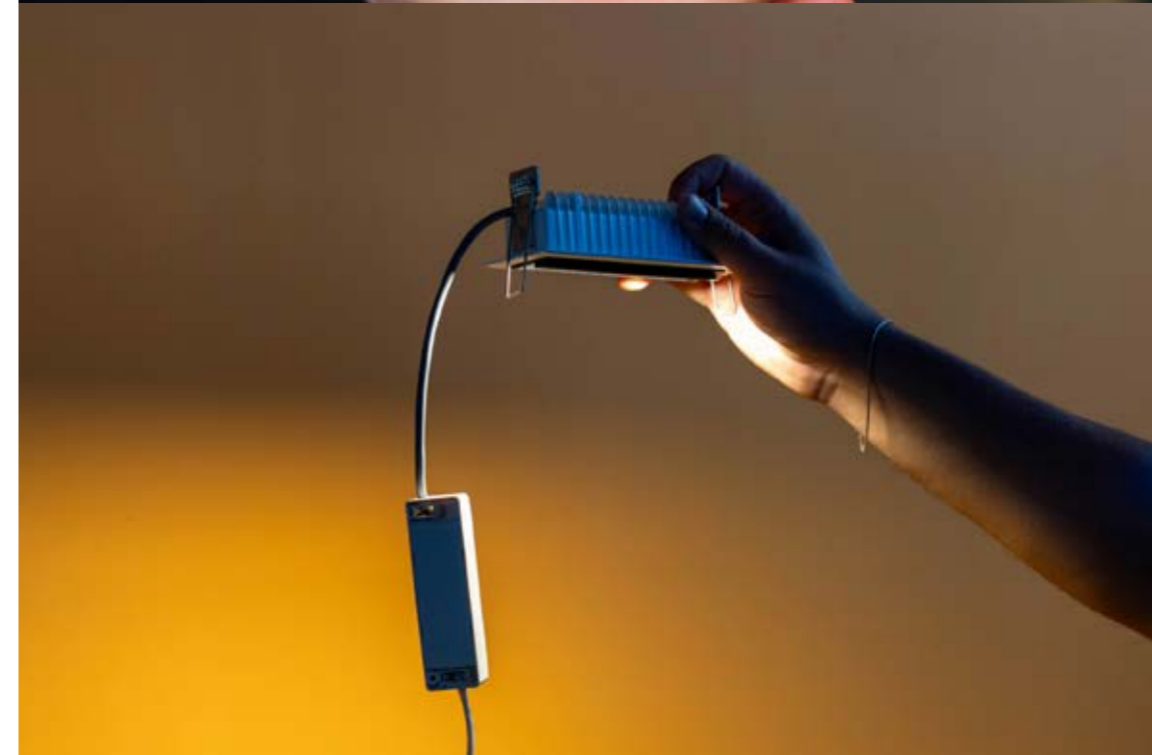
The consultancy provided during the procurement process facilitates decision-making while ensuring the sustainability of project quality. In this way, the correct product selection is achieved, and potential risks during implementation are minimized.

Site Supervision

Ensuring that the implementation process progresses in line with the design is essential for the success of the project. This stage plays a critical role in monitoring how design decisions are reflected in practice and making timely adjustments when necessary.

To achieve this, mock-up applications are reviewed on site to evaluate whether the proposed solutions meet both visual and technical expectations. As the implementation advances, fixture positions and installation details are regularly checked for compliance with the project, and corrective feedback is provided on site when needed.

On-site observations and inspections ensure that the system is built on a solid foundation. Before moving on to the next step, commissioning, the progress of the implementation is verified and the integrity of the design is preserved.



System Commissioning Supervision

Ensuring that the lighting systems operate exactly as designed is an indispensable step for the successful completion of the project. Commissioning supervision ensures that control and scenario management are effectively carried out for both interior and exterior lighting systems.

During this process, the product groups and scenarios defined within the interior automation system are checked on site and tested in terms of functionality, response times, and user experience. In addition, automation scenarios developed for façade lighting are defined and their integration with the system is supervised. All tests are conducted with a focus on both aesthetics and energy efficiency.

Through commissioning supervision, the proper operation of the systems is guaranteed, while potential issues are identified and resolved before the systems are put into use. This stage serves as the final technical step that documents the successful completion of the entire design and implementation process.

Portfolio

- 32 Bahçeşehir University South Campus
- 44 Uçge Central Office
- 52 International Pediatric Hospital, Türkmenistan
- 58 Viyana Kahvesi
- 62 İzmir IT Valley
- 70 Antalya Butterfly World
- 74 Bluemosque
- 86 Galata Tower
- 90 Zeytinburnu Millet Mosque
- 98 Hagia Sophia
- 104 Digital Experience Museum
- 108 Maidens Tower Port
- 112 Beykoz Çubuklu Silos
- 120 Justinianus Bridge
- 130 Sagalassos Antique City
- 140 Şerefiye Cistern
- 142 International Ahal Teke Horsemanship Complex, Türkmenistan
- 150 Tefkiye Mosque
- 152 Şevketiye Mosque
- 154 Piccolo Cocktail Bar
- 158 Palet Pre-School
- 160 Ankara Kazan Soda-Coustic Factory
- 164 Çanakkale Bridge
- 166 IGA Turkish Technic MRO Complexes

Bahçeşehir University South Campus

Lighting Design and Consultancy, Application
Supervision
Lighting Collective
2025

Architecture
HND Architecture

Photo
Collective Production





Bahçeşehir University South Campus

Lighting Design and Consultancy, Application
Supervision
Lighting Collective
2025

Architecture
HND Architecture

Photo
Collective Production



Bahçeşehir University South Campus

Lighting Design and Consultancy, Application
Supervision
Lighting Collective
2025

Architecture
HND Architecture

Photo
Collective Production



Bahçeşehir University South Campus

Lighting Design and Consultancy, Application
Supervision
Lighting Collective
2025

Architecture
HND Architecture

Photo
Collective Production



Bahçeşehir University South Campus

Lighting Design and Consultancy, Application
Supervision
Lighting Collective
2025

Architecture
HND Architecture

Photo
Collective Production



Bahçeşehir University South Campus

Lighting Design and Consultancy, Application
Supervision
Lighting Collective
2025

Architecture
HND Architecture

Photo
Collective Production



Bahçeşehir University South Campus

Lighting Design and Consultancy, Application
Supervision
Lighting Collective
2025

Architecture
HND Architecture

Photo
Collective Production





Bahçeşehir University South Campus

Lighting Design and Consultancy, Application
Supervision
Lighting Collective
2025

Architecture
HND Architecture

Photo
Collective Production



Bahçeşehir University South Campus

Lighting Design and Consultancy, Application
Supervision
Lighting Collective
2025

Architecture
HND Architecture

Photo
Collective Production



Bahçeşehir University South Campus

Lighting Design and Consultancy, Application
Supervision
Lighting Collective
2025

Architecture
HND Architecture

Photo
Collective Production





Ucge Central Office

Lightind Design and Consultancy
Lighting Collective
2025

Architecture
Yalin Tan + Partners

Photo
İbrahim Özbunar



Ucge Central Office

Lightind Design and Consultancy
Lighting Collective
2025

Architecture
Yalin Tan + Partners

Photo
İbrahim Özbunar



Ucge Central Office

Lightind Design and Consultancy
Lighting Collective
2025

Architecture
Yalin Tan + Partners

Photo
İbrahim Özbunar



Ucge Central Office

Lightind Design and Consultancy
Lighting Collective
2025

Architecture
Yalin Tan + Partners

Photo
Ibrahim Özbunar



Ucge Central Office

Lightind Design and Consultancy
Lighting Collective
2025

Architecture
Yalin Tan + Partners

Photo
Ibrahim Özbunar



Uçge Central Office

Lightind Design and Consultancy
Lighting Collective
2025

Architecture
Yalın Tan + Partners

Photo
İbrahim Özbunar



Uçge Central Office

Lightind Design and Consultancy
Lighting Collective
2025

Architecture
Yalın Tan + Partners

Photo
İbrahim Özbunar

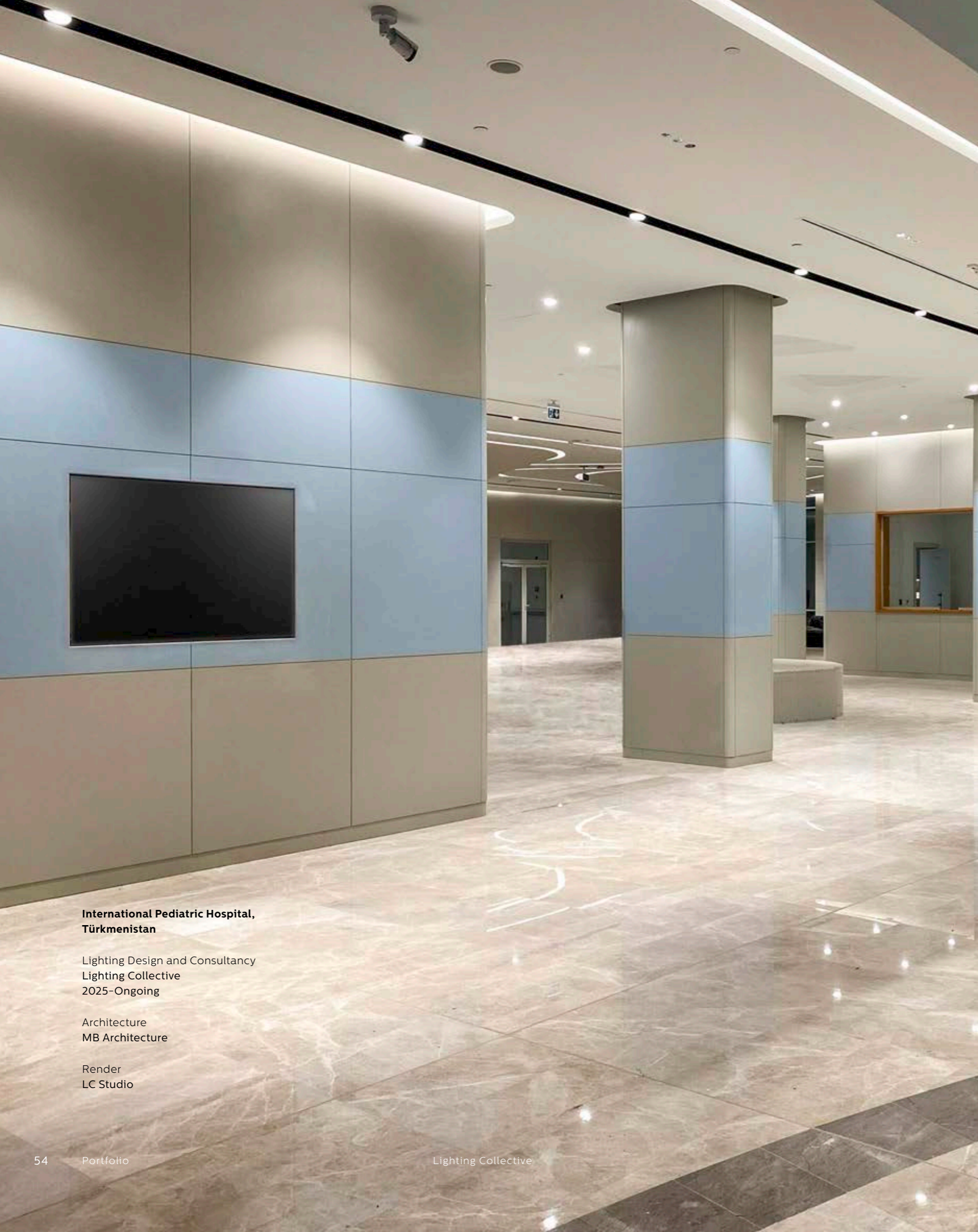
**International Pediatric Hospital,
Türkmenistan**

Lighting Design and Consultancy
Lighting Collective
2025-Ongoing

Architecture
MB Architecture

Render
LC Studio





**International Pediatric Hospital,
Türkmenistan**

Lighting Design and Consultancy
Lighting Collective
2025-Ongoing

Architecture
MB Architecture

Render
LC Studio



**International Pediatric Hospital,
Türkmenistan**

Lighting Design and Consultancy
Lighting Collective
2025-Ongoing

Architecture
MB Architecture

Render
LC Studio

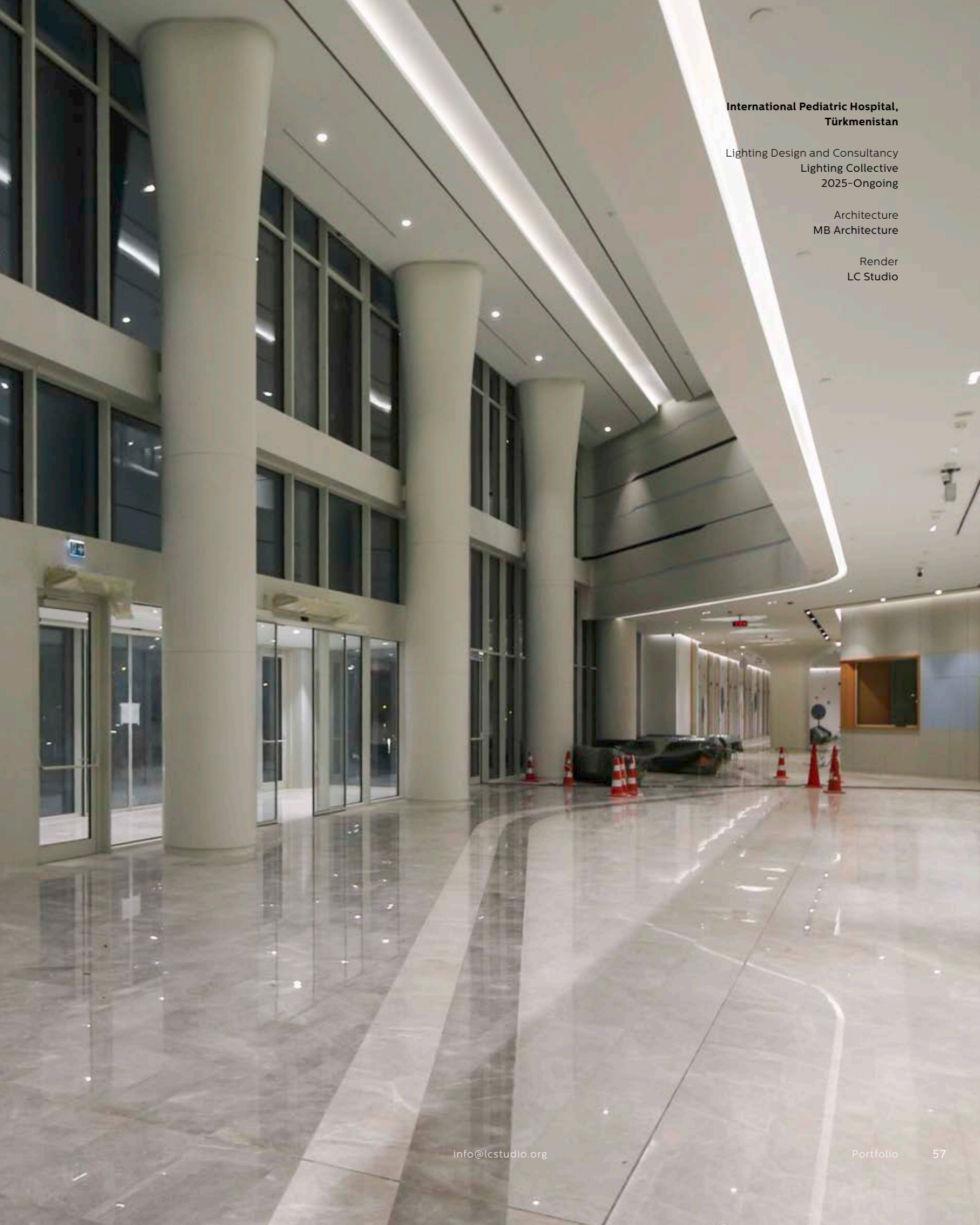


International Pediatric Hospital,
Türkmenistan

Lighting Design and Consultancy
Lighting Collective
2025-Ongoing

Architecture
MB Architecture

Render
LC Studio



International Pediatric Hospital,
Türkmenistan

Lighting Design and Consultancy
Lighting Collective
2025-Ongoing

Architecture
MB Architecture

Render
LC Studio



Viyana Kahvesi

Lighting Design and Consultancy
Lighting Collective
2025

Architecture
Naif Architecture

Photo
Collective Production



Viyana Kahvesi

Lighting Design and Consultancy
Lighting Collective
2025

Photo
Collective Production



Viyana Kahvesi
Lighting Design and Consultancy
Lighting Collective
2025
Architecture
Naif Architecture
Photo
Collective Production



Viyana Kahvesi
Lighting Design and Consultancy
Lighting Collective
2025
Architecture
Naif Architecture
Photo
Collective Production

Izmir IT Valley

Lighting Design and Consultancy
Lighting Collective
2022-Ongoing

Architecture
Mi' Mar Mimarlık

Render
LC Studio



Izmir IT Valley

Lighting Design and Consultancy
Lighting Collective
2022-Ongoing

Architecture
Mi'Mar Mimarlık

Render
LC Studio





Izmir IT Valley
Lighting Design and Consultancy
Lighting Collective
2022-Ongoing

Architecture
Mi'Mar Mimarlık

Render
LC Studio



Izmir IT Valley
Lighting Design and Consultancy
Lighting Collective
2022-Ongoing

Architecture
Mi'Mar Mimarlık

Render
LC Studio

Izmir IT Valley

Lighting Design and Consultancy
Lighting Collective
2022-Ongoing

Architecture
Mi'Mar Mimarlık

Render
LC Studio



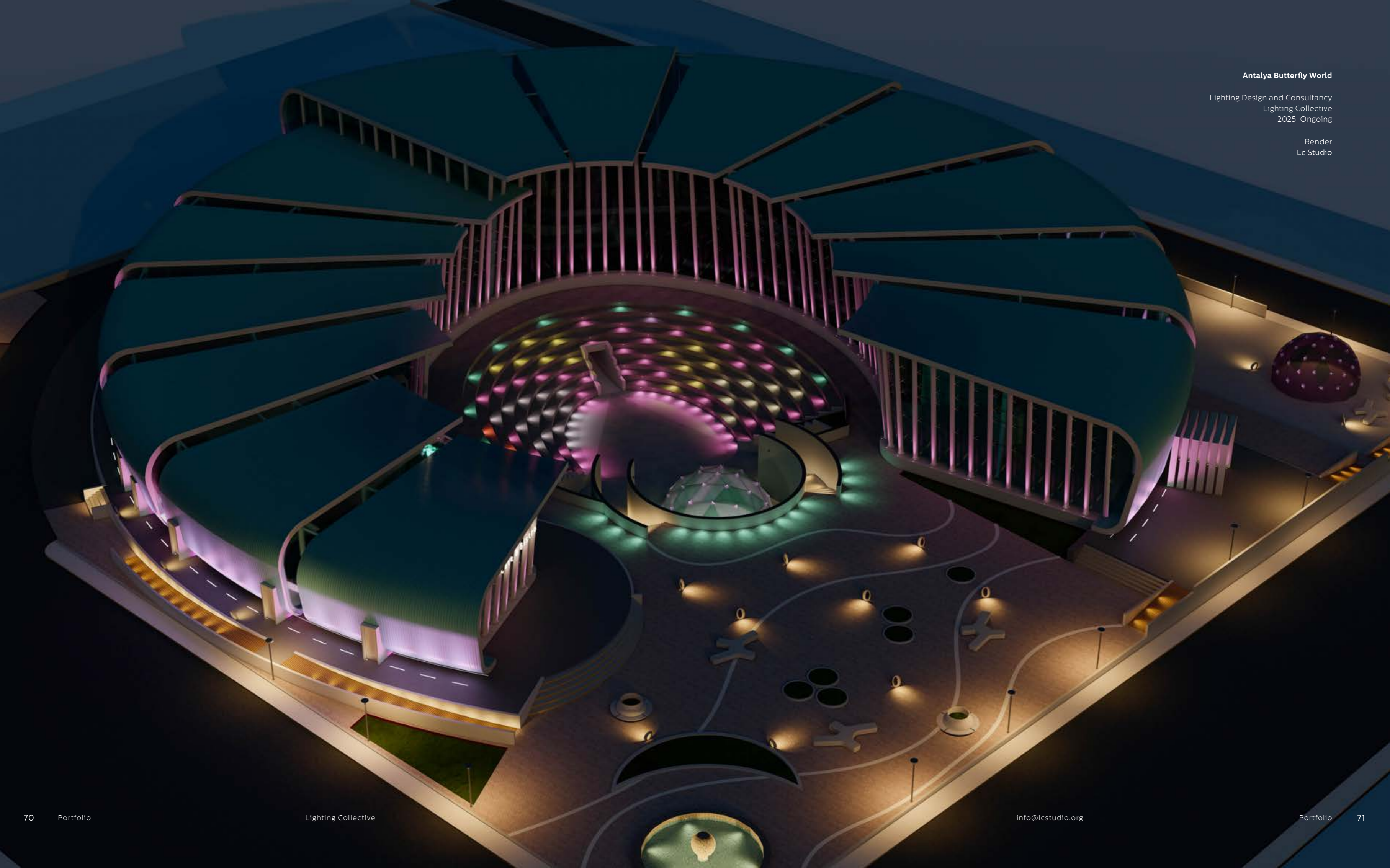
Izmir IT Valley

Lighting Design and Consultancy
Lighting Collective
2022-Ongoing

Architecture
Mi'Mar Mimarlık

Render
LC Studio



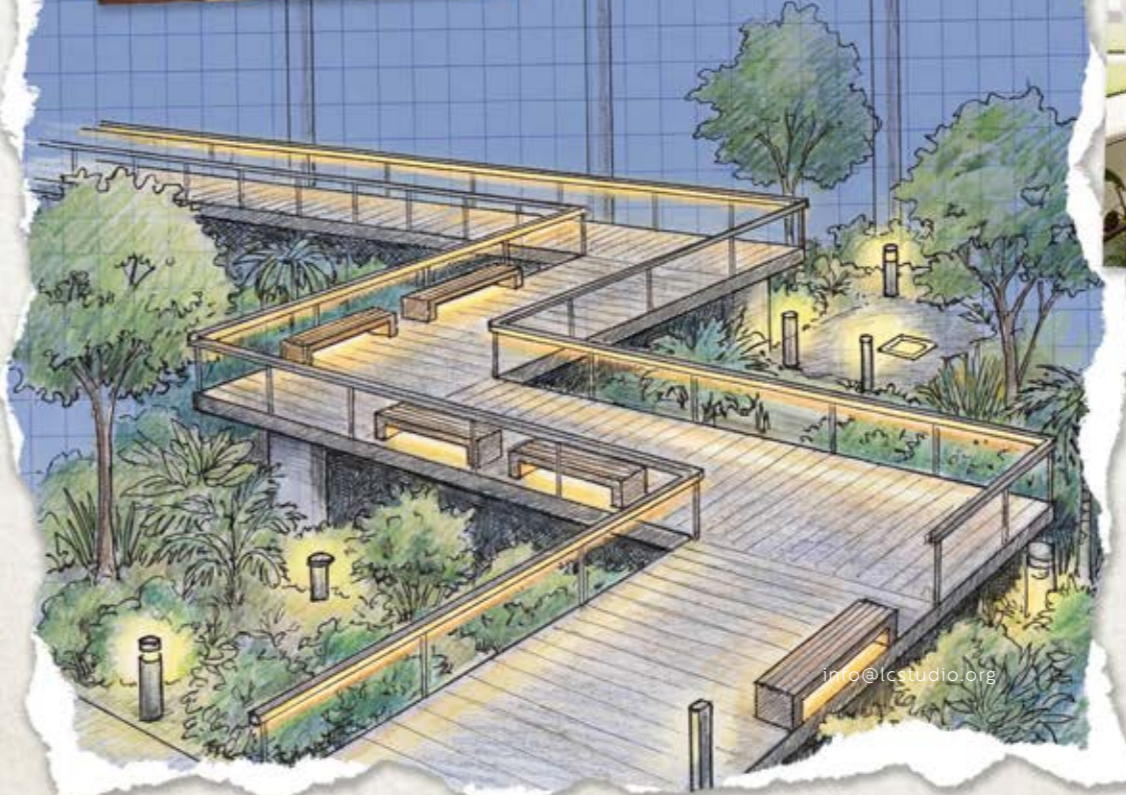




Antalya Butterfly World

Lighting Design and Consultancy
Lighting Collective
2025-Ongoing

Render
Intermim Atelye



Antalya Butterfly World

Lighting Design and Consultancy
Lighting Collective
2025-Ongoing

Render
Lc Studio

Bluemosque

Facade Lighting Design
Lighting Collective
2021

Render
LC Studio



Bluemosque Avlu

Lighting Design and Application Supervision
Lighting Collective
2023

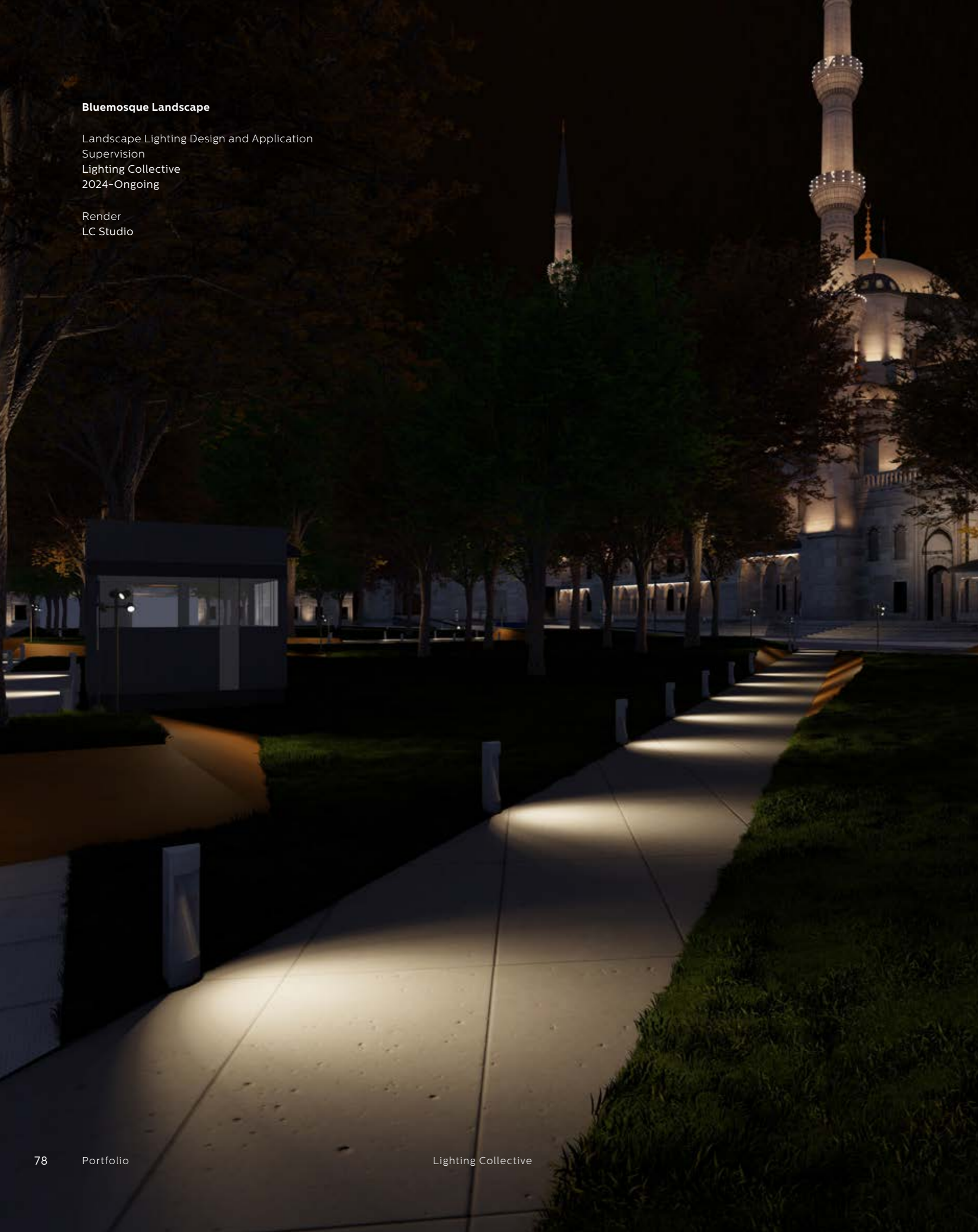
Photo
Collective Production



Bluemosque Landscape

Landscape Lighting Design and Application
Supervision
Lighting Collective
2024-Ongoing

Render
LC Studio



Bluemosque Landscape

Landscape Lighting Design and Application
Supervision
Lighting Collective
2024-Ongoing

Render
LC Studio





Bluemosque İç Mekan

Lighting Design and Application Supervision
Lighting Collective
2023

Photo
Collective Production



Bluemosque İç Mekan

Lighting Design and Application Supervision
Lighting Collective
2023

Photo
Collective Production



Bluemosque

Wet Spaces
Lighting Collective
2022

Photo
Collective Production



Bluemosque

Wet Spaces
Lighting Collective
2022

Photo
Collective Production



Bluemosque

Wet Spaces
Lighting Collective
2022

Photo
Collective Production



Bluemosque

Wet Spaces
Lighting Collective
2022

Photo
Collective Production







Galata Tower

Lighting Design Consultancy, System Renewal
and Supervision
Lighting Collective
2024

Photo
Collective Production



Zeytinburnu Millet Mosque

Lighting Design and Consultancy
Lighting Collective
2023

Architecture
Mi'Mar Mimarlık

Photo
Furkan AL

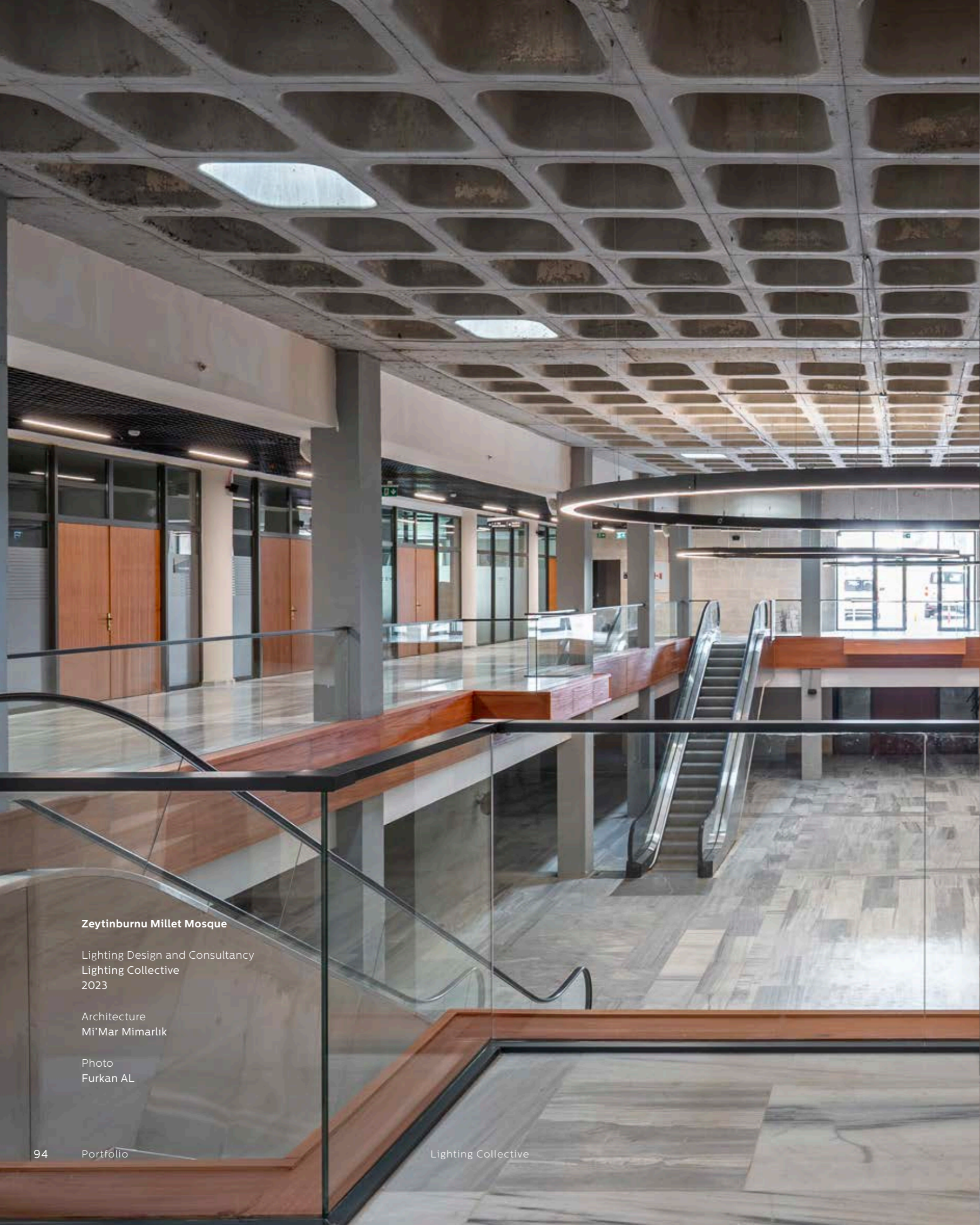


Zeytinburnu Millet Mosque

Lighting Design and Consultancy
Lighting Collective
2023

Architecture
Mi'Mar Mimarlık

Photo
Furkan AL

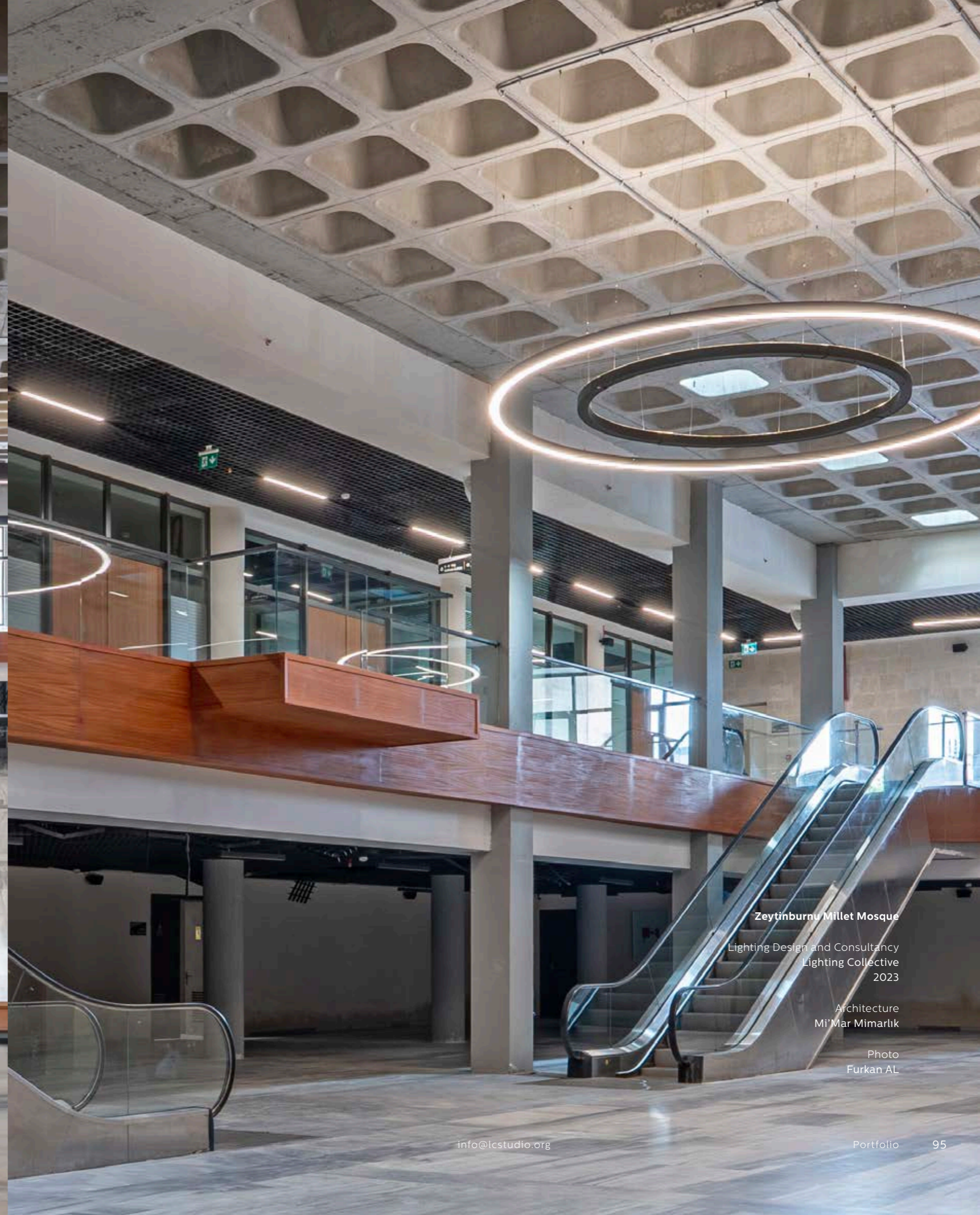


Zeytinburnu Millet Mosque

Lighting Design and Consultancy
Lighting Collective
2023

Architecture
Mi'Mar Mimarlık

Photo
Furkan AL

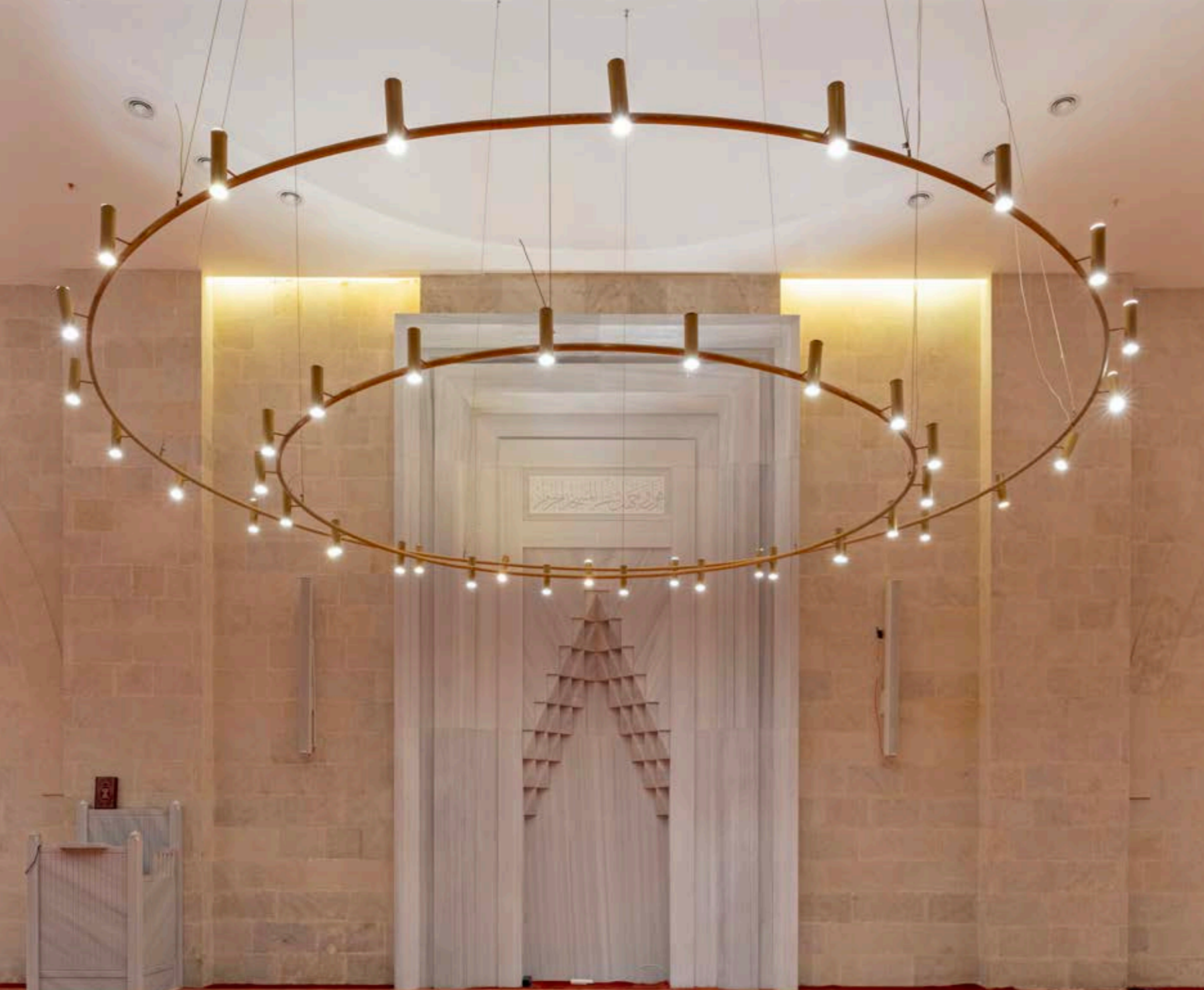


Zeytinburnu Millet Mosque

Lighting Design and Consultancy
Lighting Collective
2023

Architecture
Mi'Mar Mimarlık

Photo
Furkan AL



Zeytinburnu Millet Mosque

Lighting Design and Consultancy
Lighting Collective
2023

Architecture
Mi'Mar Mimarlık

Photo
Furkan AL



Zeytinburnu Millet Mosque

Lighting Design and Consultancy
Lighting Collective
2023

Architecture
Mi'Mar Mimarlık

Photo
Furkan AL

Hagia Sophia

Facade Lighting Design, Consultancy and
Project Development

Lighting Collective
2022

Render
LC Studio



Hagia Sophia

Interior Lighting Design, Renewal, Consultancy
and Project Development
Lighting Collective
2022

Photo
Collective Production



Hagia Sophia

İç Mekan Aydınlatma Tasarımı ve
Uygulama Süpervizörlüğü
Lighting Collective

info@lcstudio.org



Hagia Sophia

Interior Lighting Design, Renewal, Consultancy
and Project Development
Lighting Collective
2022

Photo
Collective Production



Hagia Sophia

Interior Lighting Design, Renewal, Consultancy
and Project Development
Lighting Collective
2022

Photo
Collective Production



Digital Experience Museum

Installation Design and Application
Lighting Collective
2023

Architectura
Bovuntur Partners

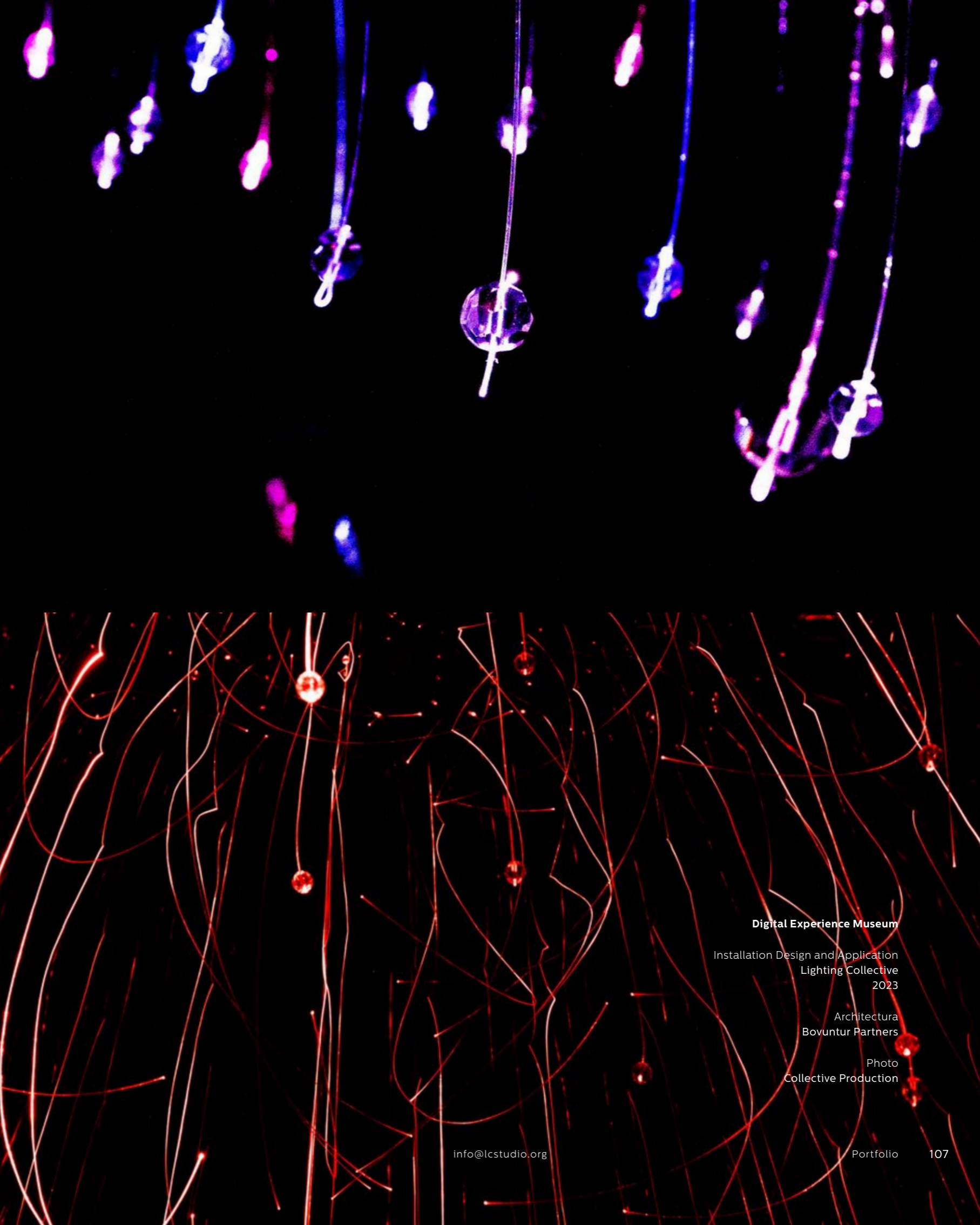
Photo
Collective Production

Digital Experience Museum

Installation Design and Application
Lighting Collective
2023

Architectura
Bovuntur Partners

Photo
Collective Production



Digital Experience Museum

Installation Design and Application
Lighting Collective
2023

Architectura
Bovuntur Partners

Photo
Collective Production

Maidens Tower Port

Lighting Design, Application Supervision
Lighting Collective
2024

Architecture
Han Tümertekin Architects

Photo
Collective Production





Maidens Tower Port

Lighting Design, Application Supervision
Lighting Collective
2024

Architecture
Han Tümertekin Architects

Photo
Collective Production



Maidens Tower Port

Lighting Design, Application Supervision
Lighting Collective
2024

Architecture
Han Tümertekin Architects

Photo
Collective Production



Beykoz Çubuklu Silos

Lighting Design, Consultancy and Application
Supervision
Lighting Collective
2024

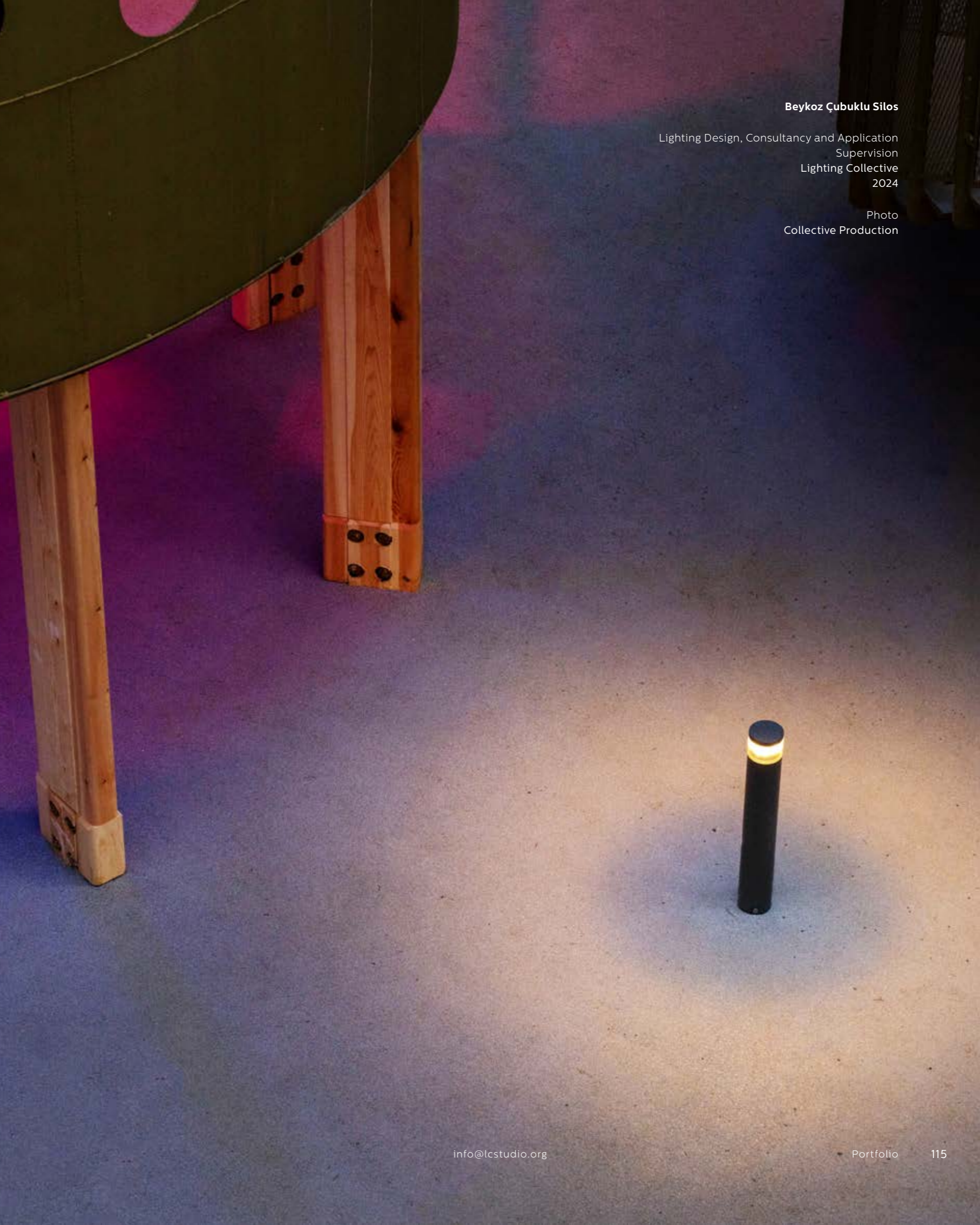
Photo
Collective Production



Beykoz Çubuklu Silos

Lighting Design, Consultancy and Application
Supervision
Lighting Collective
2024

Photo
Collective Production



Beykoz Çubuklu Silos

Lighting Design, Consultancy and Application
Supervision
Lighting Collective
2024

Photo
Collective Production



Beykoz Çubuklu Silos

Lighting Design, Consultancy and Application
Supervision
Lighting Collective
2024

Photo
Collective Production



Beykoz Çubuklu Silos

Lighting Design, Consultancy and Application
Supervision
Lighting Collective
2024

Photo
Collective Production

Beykoz Çubuklu Silos

Lighting Design, Consultancy and Application
Supervision
Lighting Collective
2024

Photo
Collective Production



Beykoz Çubuklu Silos

Lighting Design, Consultancy and Application
Supervision
Lighting Collective
2024

Photo
Collective Production

Justinianus Bridge

Lighting Design, Consultancy and Application
Supervision
Lighting Collective
2025-Ongoing

Photo
Collective Production



Justinianus Bridge

Lighting Design, Consultancy and Application
Supervision
Lighting Collective
2025-Ongoing

Photo
Collective Production





Justinianus Bridge

Lighting Design, Consultancy and Application
Supervision
Lighting Collective
2025-Ongoing

Photo
Collective Production



Justinianus Bridge

Lighting Design, Consultancy and Application
Supervision
Lighting Collective
2025-Ongoing

Photo
Collective Production

Justinianus Bridge

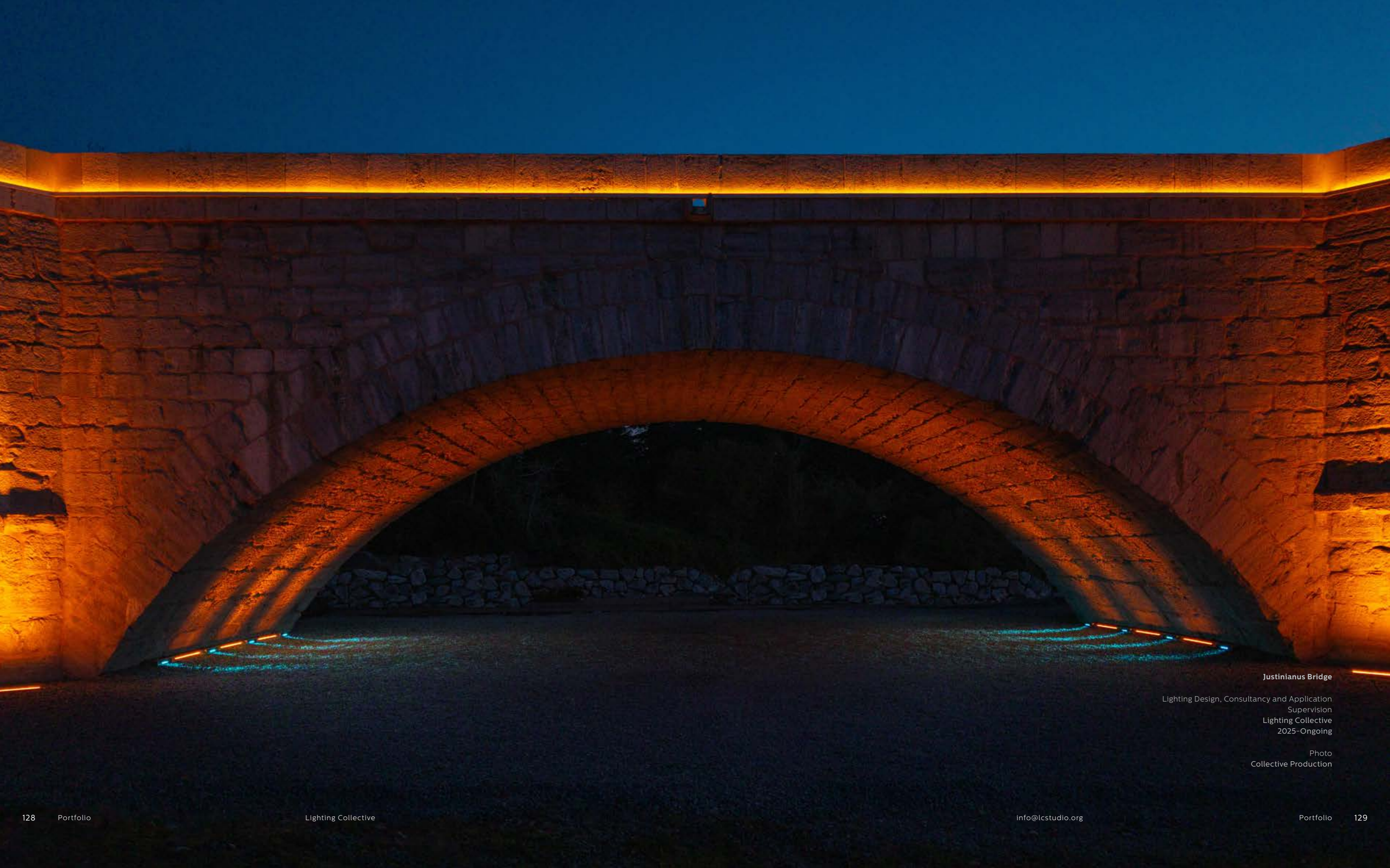
Lighting Design, Consultancy and Application
Supervision
Lighting Collective
2025-Ongoing

Photo
Collective Production



Justinianus Köprüsü
Aydınlatma Tasarımı,
Uygulama Süpervizörlüğü
Lighting Collective
2025-Devam

Photo
Collective Production



Justinianus Bridge

Lighting Design, Consultancy and Application
Supervision
Lighting Collective
2025-Ongoing

Photo
Collective Production





Sagalassos Antique City

Lighting Design and Consultancy
Lighting Collective
2025

Photo
Collective Production

Sagalassos Antique City

Lighting Design and Consultancy
Lighting Collective
2025

Photo
Collective Production









Sagalassos Antique City

Lighting Design and Consultancy
Lighting Collective
2025

Photo
Collective Production





Şerefiye Cistern

Lighting Design
Lighting Collective
2022

Render
LC Studio



**International Ahal Teke Horsemanship
Complex, Turkmenistan**

Lighting Design and Consultancy
Lighting Collective
2025-Ongoing

Architecture
MB Architecture

Render
LC Studio

International Ahal Teke Horsemanship
Complex, Turkmenistan

Lighting Design and Consultancy
Lighting Collective
2025-Ongoing

Architecture
MB Architecture

Render
LC Studio



International Ahal Teke Horsemanship
Complex, Türkmenistan

Lighting Design and Consultancy
Lighting Collective
2025-Ongoing

Architecture
MB Architecture

Render
LC Studio



International Ahal Teke Horsemanship
Complex, Türkmenistan

Lighting Design and Consultancy
Lighting Collective
2025-Ongoing

Architecture
MB Architecture

Render
Mb Architecture



**International Ahal Teke Horsemanship
Complex, Türkmenistan**

Lighting Design and Consultancy
Lighting Collective
2025-Ongoing

Architecture
MB Architecture

Render
Mb Architecture



Tevfikiye Mosque

Lighting Design
Lighting Collective
2024

Photo
Collective Production



Tevfikiye Mosque

Lighting Design
Lighting Collective
2024

Photo
Collective Production

Şevketiye Mosque

Lighting Design
Lighting Collective
2024

Photo
Collective Production





Piccolo Cocktail Bar

Lighting Design
Decorative Fixture Design and Production,
Application Supervision
Lighting Collective
2024

Photo
Collective Production





Piccolo Cocktail Bar

Lighting Design
Decorative Fixture Design and Production,
Application Supervision
Lighting Collective
2024

Photo
Collective Production



Palet Pre-School

Lighting Design and Consultancy
Lighting Collective
2024-Ongoing

Architecture
Mi'Mar Mimarlık

Render
LC Studio

Ankara Kazan Soda-Coustic Factory

Lighting Design
Lighting Collective
2022

Photo
Collective Production

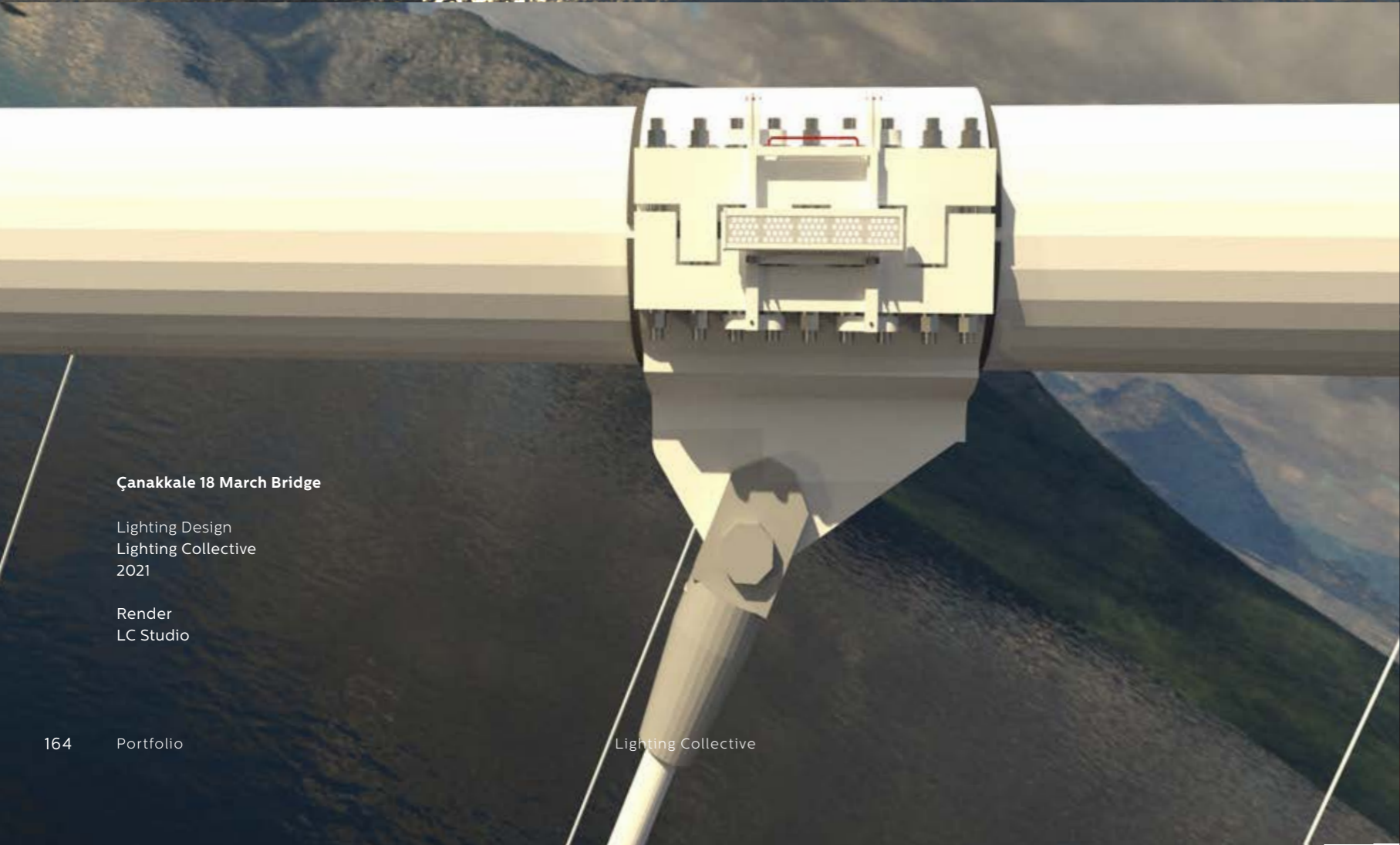
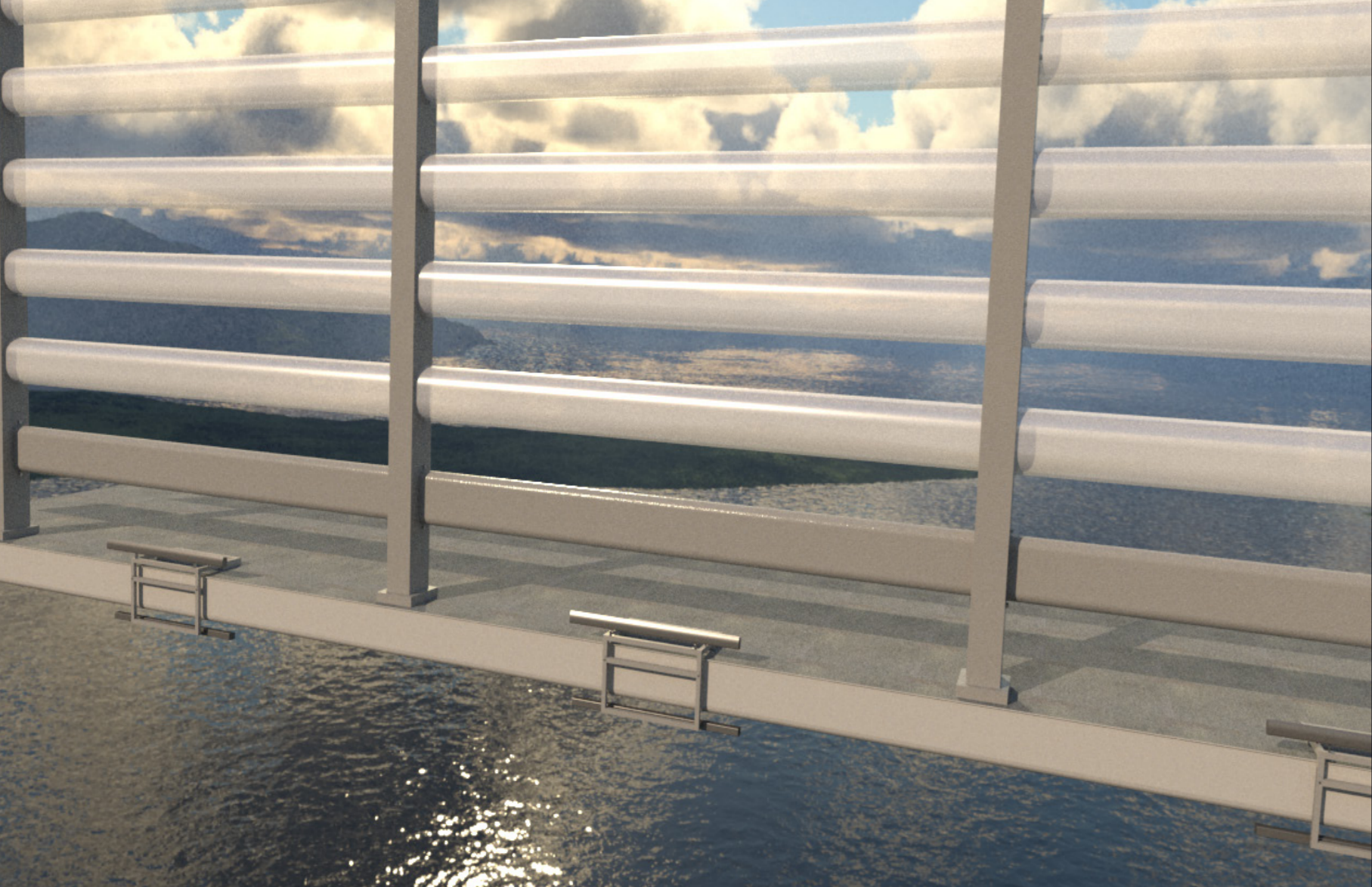


Ankara Kazan Soda-Coustic Factory

Lighting Design
Lighting Collective
2022

Photo
Collective Production





Çanakkale 18 March Bridge

Lighting Design
Lighting Collective
2021

Render
LC Studio



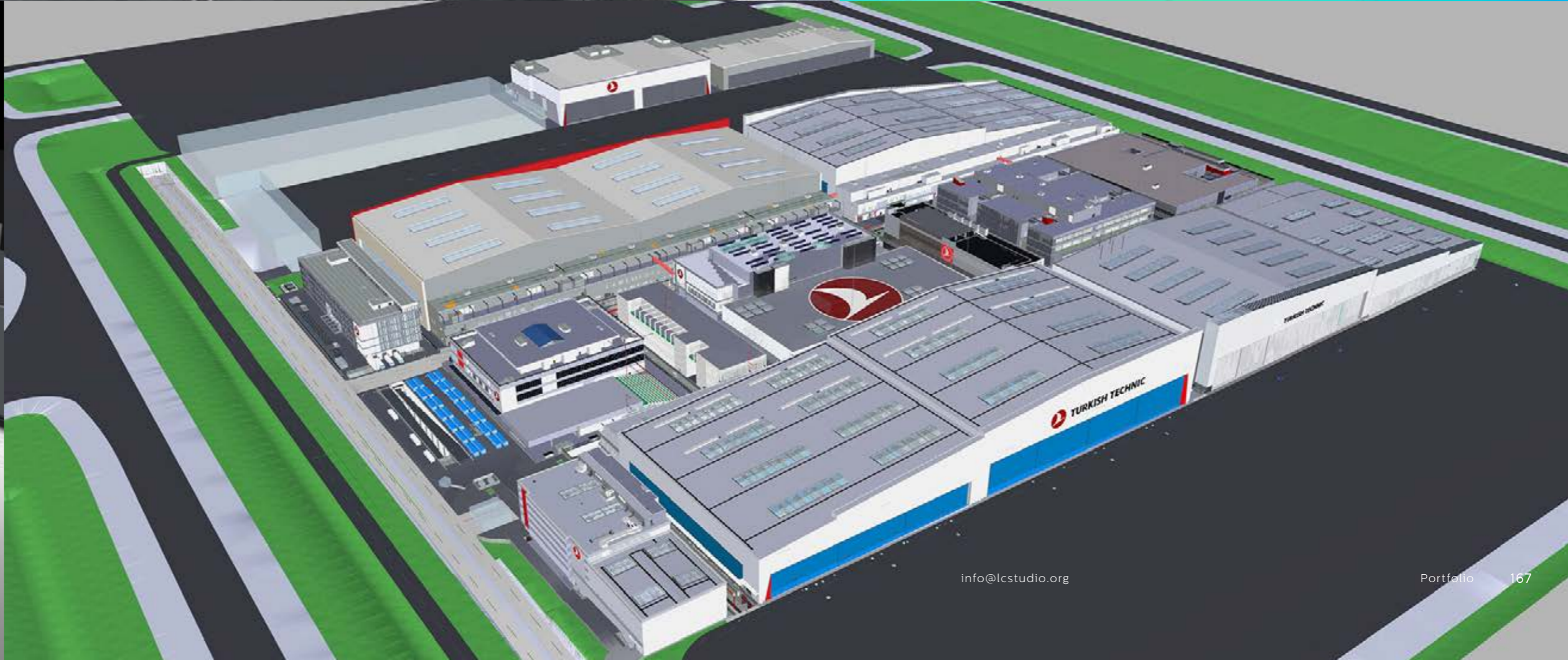
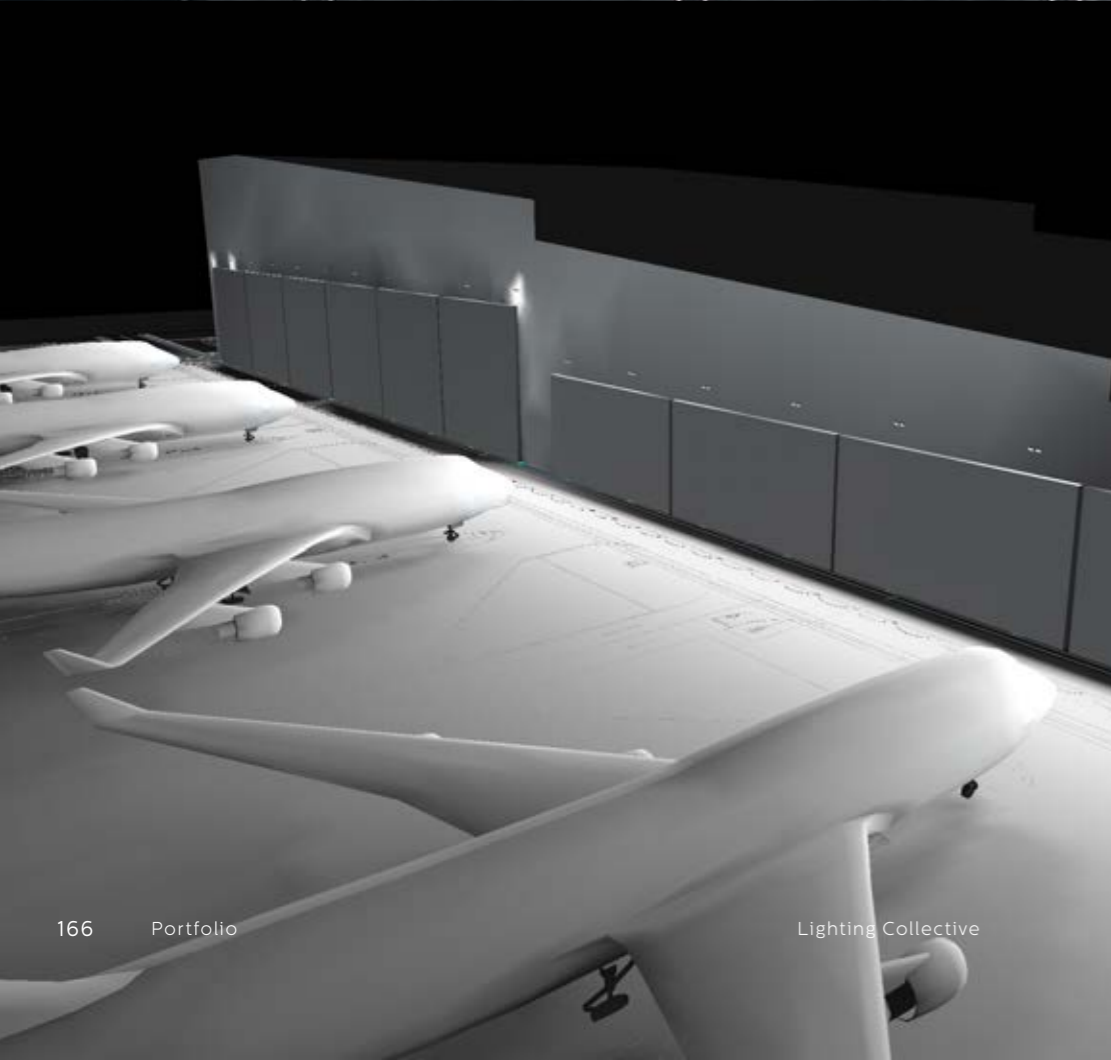
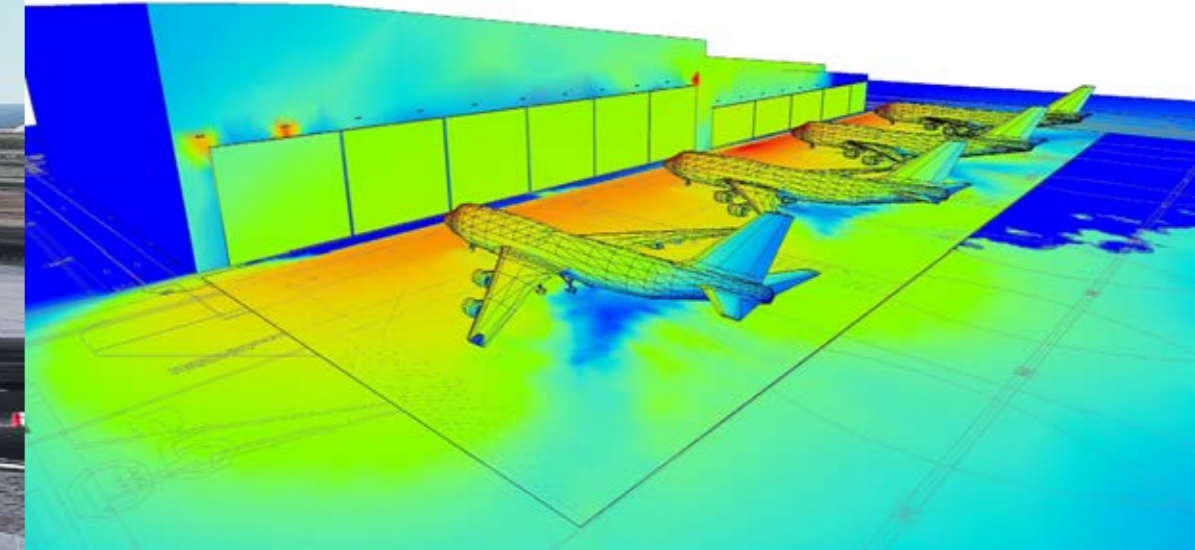
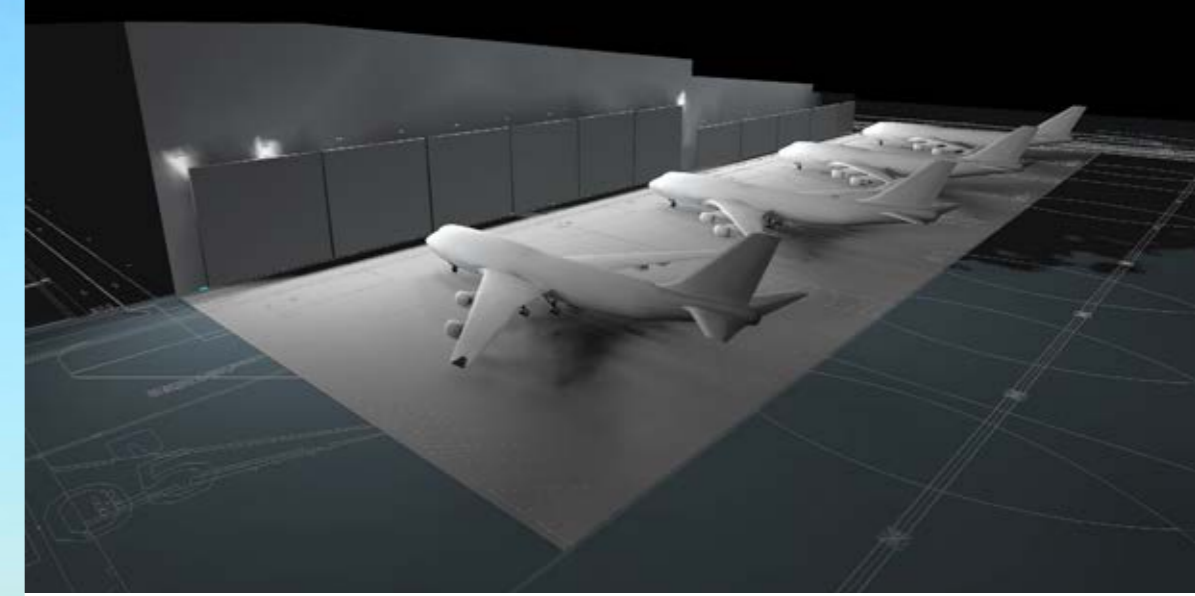
Çanakkale 18 March Bridge

Lighting Design
Lighting Collective
2021

Render
LC Studio

IGA Turkish Technic MRO Complexes

Lighting Design
Lighting Collective
2020



Projects



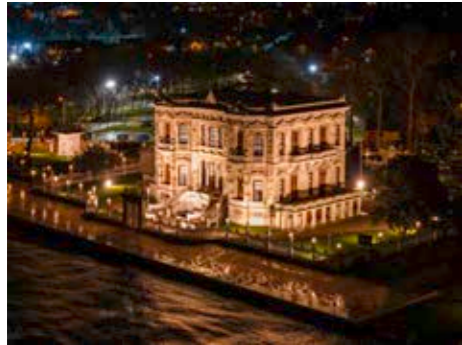
Turkmenistan Infection Hospital, Merv



Fatih Mosque Madrasahs



LIV College, Ankara



Küçüksu Palace, Beykoz



Hacı Bektaş-ı Veli Shrine, Nevşehir

TOURISM & HOSPITALITY

Adela Otel
Ayramin Otel
Best Western Premier Hotel
Conrad Bosphorus Hotel
Double Tree Hotel By Hilton
Dream Hill Otel
Fortina Hotel, Malta
Kyrenia Concorde Hotel
Khalou Hotel
Korkmaz Motel
Raffles Hotel Lobi Enstalasyon
Minsarı Hotel
Ümraniye Hilton
Yenifoça Butik Hotel
Zalaat Tower Hotel&Spa, Moğolistan

PUBLIC & URBAN

Adile Sultan Çeşmesi Ve Çay Bahçesi
Ali Kethüda Camii
Anafartalar | Gülhane İş Hanı
Anafartalar | Mermercizade İş Hanı
Anafartalar | Alibey İş Hanı
Anafartalar | Göktaşlar İş Hanı
Antalya Butterfly World
Beşiktaş İskelesi
Beyoğlu Belediye Binası
Beyoğlu Belediyesi Sokak Enstalasyonları
Büyükkçekmece Belediye Binası
Çatalca Belediye Binası
Çubuklu Silos
Digital Experience Museum
Fatih Belediyesi Sokak Enstalasyonları
Esenler Belediyesi Sokak Enstalasyonları
Huayna Capac Park, Peru
İstanbul Adli Tıp Binası
Karayolları Binası, Irak
Kgm Akıllı Ulaşım Sistemleri Binası
Kız Kulesi Karşılama Binası
Konaev Congress Hall, Kazakistan
Parking Building, Libya
Plaza De Armas, Peru
Samsun Balık Pazarı
Thy Cıp Lounge

CULTURAL & HERITAGE

Ahmet Ratıp Paşa Köşkü
Akhnaton Museum, Mısır
Tevfikkiye Mosque
Arslanhane Camii, Ankara

Aspendos Antik Tiyatrosu
Hagia Sophia
Battalgazi Ulu Camii, Malatya
Beyazıt Camii
Beyazıt Kütüphanesi
Botter Apartmanı
Bukoleon Sarayı
Büyükkçekmece Atatürk Evi
Büyükkçekmece Cemevi
Büyük Postane
Cacabey Uzay Medresesi
Çekmeköy Camii
Çorum Ulu Camii
Damatris Sarayı
Edirne Tunca Köprüsü
Fatih Camii Hazire
Fatih Camii Karadeniz Medreseleri
Galata Köprüsü
Galata Tower
Galata Mevlevihanesi
Hacı Bektaş-ı Veli Türbesi
Hilmi Abbas Camii
Hüseyin Paşa Camii, Şanlıurfa
İskenderpaşa Kanlıca Camii
İstanbul Arkeoloji Müzesi
İstanbul Su Müzesi
İstanbul Valiliği Bab-ı Ali Kapısı
İzmit Fransız Mektebi
İzmir Tabakhane Ve Çırcır Fabrikası
Justinianus Köprüsü
Kasımpaşa Mevlevihanesi
Koca Ragıp Paşa Kütüphanesi
Konya Gevale Kalesi
Kumkapı Karakol Binası
Küçüksu Kasrı
Laleli Camii
Levent Camii
Merkezefendi Camii Kompleksi
Metro Han, Karaköy
Mısır Konsoloslugu
Misis Köprüsü, Adana
Musul Köprüsü
Nidakule Levent
Osman Hamdi Bey Müzesi
Sagalassos Antique City
Selahaddin Eyyübi Camii
Sepetçiler Kasrı
Sirkeci Şekerhan
Şerefiye Cistern
Şevketiye Mosque

Sirkeci Büyük Postane
Bluemosque
Sümela Manastırı
Sungurbey Camii, Niğde
Tarihi İtfaiye Binası
Türk İslam Eserleri Müzesi
Urfa Kalesi
Urfa Ulu Camii
Yedikule Gazhane
Zeytinburnu Millet Mosque
Zeytinburnu City Walls

SPORT

Başakşehir Stadyumu
Beyoğlu Belediyesi Fethitepe Spor Tesisi
Ganja Stadium, Azerbaycan
İbb Halkalı Stadi
Kızılıpınar 100.Yıl Stadyumu
Niğde Stadyumu
Niksar Belediyesi Spor Salonu
Stadium Brasov, Romanya
Trakya Üni. Kırkpınar Besyo Spor Salonu
Uluslararası Ahal Teke Binicilik Spor Kompleksi

OFFICE & COMPLEX

Avalon Tower, Sofya
Denizbank Gayrettepe
Dentcraft
Ing Bank
İş Bankası Oditoryum
Koç Çamlıca Veri Merkezi
Lotus Office
Mars Tower
Maslak No1
Sun Plaza
Tarihi Un Fabrikası Sinpaş Holding
Tarlabaşı 360
Torkam Malatya
Üçge Ofis Bursa
Üçge Ofis İstanbul
Zecorner Ofis

RETAIL & SHOPPING

Bilgin Residence
Duşanbe Avm & Ofis Binası, Tacikistan
Hatay Kuyumcular Çarşısı
Mırmall Kırklareli
Paleo Galata
Paleo İstiklal
Paleo Nişantaşı

Plaza Mall Gjakove, Kosova
Polight Showroom
Qteks Showroom
Rams City Gaziantep
Ritim İstanbul

HEALTH

Acıbadem Hastanesi
Fcr Gyo Sağlık Merkezi
Göztepe Medicalpark Hastanesi
Liv Hospital, Bursa
Mohal Namaha Hospital, Umman
Türkmenistan Enfeksiyon Hastanesi
Türkmenistan International Pediatric Hospital

ACCOMODATION & LIFE

Al Wide, Irak
Alanya Saf Evi
Selenium Park Aşçıoğlu
Emlak Konut Yeniköy Konutları
Loft Residence
Meydan Ardıçlı Bahçeşehir
Seyir Konakları, Çanakkale
Tulip Towers, Irak
Yeniköy Konakları

INDUSTRIAL & LOGISTICS

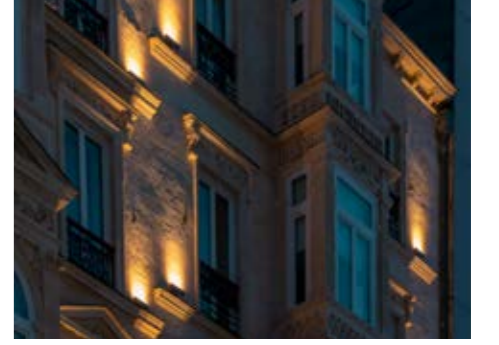
Ankara Kazan Soda-Cooustic Factory
Çanakkale 18 March Bridge
Flokser Kimya Depoları
İstanbul Havalimanı
Osmangazi Köprüsü
Türk Hava Yolları Mro Apron
Vlora Airport, Arnavutluk

EDUCATION

Bahçeşehir University South Campus,
Beşiktaş
Galatasaray Üniversitesi Kütüphanesi
İzmir Teknoloji Üssü
Kabataş Erkek Lisesi
Liv Ümitköy Koleji, Ankara
Palet Pre-Schooli

RESTAURANT & CAFE & BAR

Fornasetti Bar
Güllüoğlu Karaköy
Merida Cafe
Piccolo Cocktail Bar
Viyan Kahvesi, Sultanahmet



Güney Palas, Beyoğlu



Paleo, Beyoğlu



Merida Cafe, Kanyon AVM



Zeytinburnu City Walls



İstanbul Arkeoloji Müzesi



Kabataş High School



Yenifoça Butique Hotel, İzmir



Square Ardiçlı, Bahçeşehir



Cacabey Astronomy Madrasah, Kırşehir



Sümela Monastery, Trabzon

References

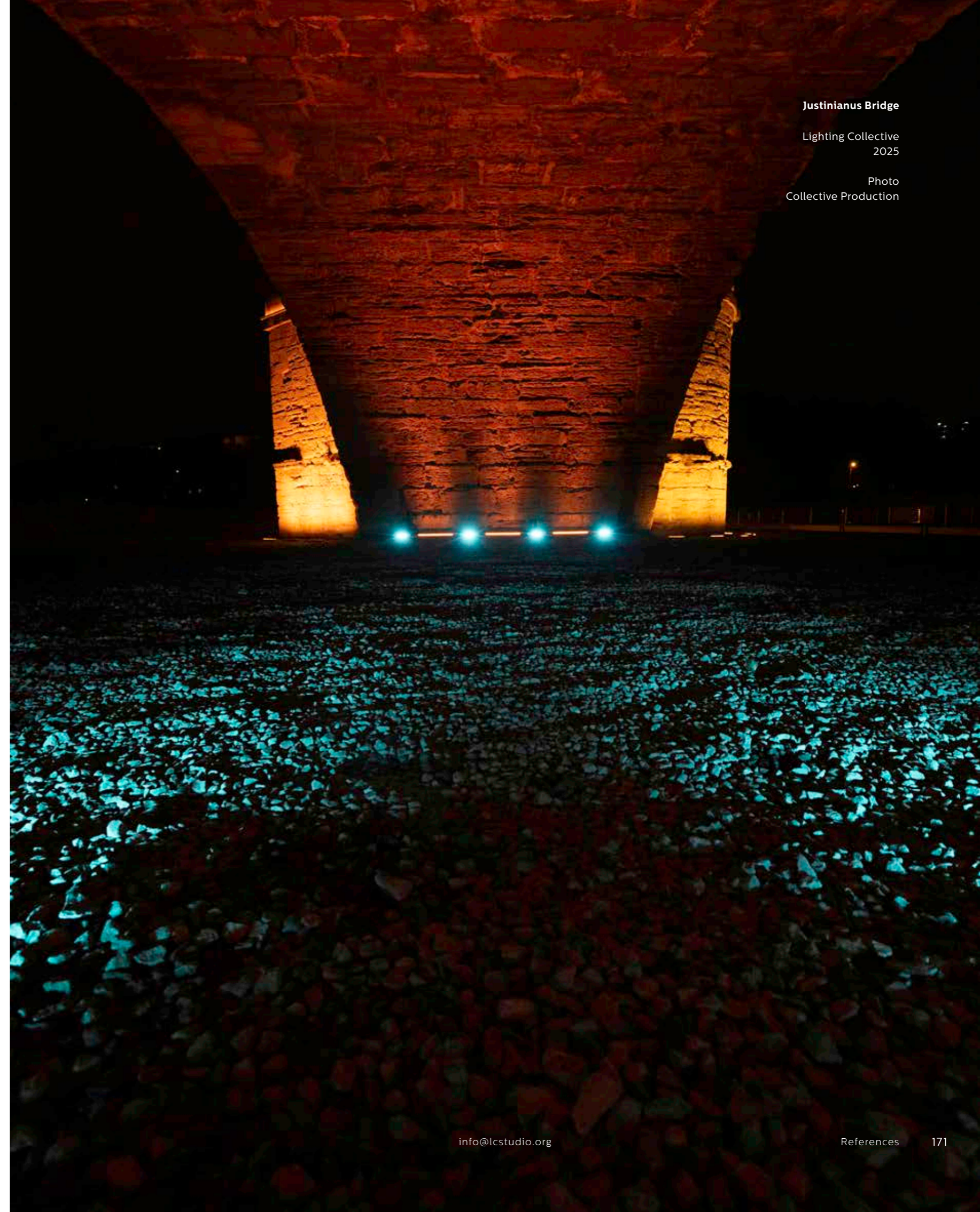
AEC Elektrik
Bergama Belediyesi
Beyoğlu Belediyesi
CDK Elektrik İnşaat
Ciner Grup
Conrad
CT Architecture
DAİM Architecture
DLSY Group
DS Landscape & Architecture
Ece İnşaat
Emlak Konut
ENG Tasarım
FZM Mühendislik
Galatasaray Üniversitesi
GAP İnşaat
Gelecek Grup
Giray Yapı
Hera Restorasyon
Hil-Merkez
HND Architecture
İGA, İstanbul Havalimanı
İntaya İntes İnşaat
İntermim İnşaat Architecture
İstanbul Büyükşehir Belediyesi

İstanbul Rölöve ve Anıtlar Müdürlüğü
İstanbul Valiliği İstanbul İl Özel İdaresi
Karacan Grup
Karayolları Genel Müdürlüğü
Kayseri İl Özel İdaresi
Kazan Soda Elektrik A.Ş.
Kültür A.Ş.
MB Architecture
Mısır Konsoloslğu
Mi'mar Architecture
Misa Architecture
Nevşehir İl Özel İdaresi
Nevşehir Valiliği
Santek Elektrik Mühendislik
Şenyurt Elektrik
T.C. Cumhurbaşkanlığı Milli Saraylar
Başkanlığı
T.C. Kültür ve Turizm Bakanlığı
Taşyapı Kara İnşaat Adi Ortaklığı
Tenax Mühendislik
Tümertekin Architecture
Vakıflar Genel Müdürlüğü
Yalın Tan Architecture
Zafer İnşaat Ticaret A.Ş.
Zeytinburnu Belediyesi

Justinianus Bridge

Lighting Collective
2025

Photo
Collective Production



Because a work done together is always more than the sum of those who created it. And what builds the future is precisely this collective labor.



Balat Street Installation

Seda Soylu
2023

Photo
Collective Production



Lighting Collective Team

No great idea is the product of a single mind. Thought gains depth and finds its true form only when voices from different disciplines meet around a common goal. We position lighting design exactly at this intersection; where architectural vision meets engineering precision, and aesthetic approach meets technical knowledge.

We conduct our projects not through a single perspective, but through a collective intelligence formed by different fields of expertise such as architects, interior designers, electrical engineers, and industrial designers. While shaping aesthetic decisions with an architectural perspective during the design process, we solve technical calculations and application details with our engineering infrastructure. Because we know that a human reaches their true potential only when they are together with others.

Collective production is made possible not by competition, but by trust; not by individual skills alone, but by the power of collaboration. Every contribution transforms the whole. Common sense (collective mind) opens up a new field of creativity that surpasses individual intuitions. Thanks to this multidisciplinary approach, we produce projects that are both visually impressive and technically flawless and applicable.

Because a work done together is always more than the sum of those who created it. And what builds the future is precisely this collective labor.

Contact

Every structure deserves a unique light and a story to tell. To us, lighting design is the bridge between technical precision and architectural vision. We are here to realize your project's potential and craft the perfect atmosphere. Let's illuminate the next chapter together

Address

Hasanpaşa mah. Hamiyet sok.
17-A, Kadıköy/İSTANBUL



Website

www.lcstudio.org



E-Mail

info@lcstudio.org



Instagram

[lighting.collective](https://www.instagram.com/lighting.collective)



Linkedin

[Lighting Collective Studio](https://www.linkedin.com/company/lighting-collective-studio)

